



**RECOMMENDATION TO:
NAESB WEQ and WGQ EXECUTIVE COMMITTEES**

Requester: FERC **Request No.:** **2007 WGQ Annual Plan Item 8
2007 WEQ Annual Plan Item 5**

1. Recommended Action:

- Accept as requested
- Accept as modified below
- Decline

**Effect of EC Vote to Accept
Recommended Action:**

- Change to Existing Practice
- Status Quo

2. TYPE OF MAINTENANCE

Per Request:

- Initiation
- Modification
- Interpretation
- Withdrawal

- Principle
- Definition
- Business Practice Standard
- Document
- Data Element
- Code Value
- X12 Implementation Guide
- Business Process Documentation

Per Recommendation:

- Initiation
- Modification
- Interpretation
- Withdrawal

- Principle
- Definition
- Business Practice Standard
- Document
- Data Element
- Code Value
- X12 Implementation Guide
- Business Process Documentation

3. RECOMMENDATION

SUMMARY:

The NAESB WGQ/WEQ eTariff Subcommittee recommends adoption of the Proposed e-Tariff Definitions and Standards set forth below. We also recommend adoption of the Implementation Guide for Electronic Tariff Filing, dated January 25, 2008 attached as APPENDIX "A".



**RECOMMENDATION TO:
NAESB WEQ and WGQ EXECUTIVE COMMITTEES**

**Requester: FERC Request No.: 2007 WGQ Annual Plan Item 8
2007 WEQ Annual Plan Item 5**

The proposed eTariff Definitions, eTariff Standards and the Implementation Guide for Electronic Tariff Filing were reached by consensus of the SC and eTTF groups during the meetings.

Final recommendations were subject to a balanced vote for the WGQ and WEQ.

The specific Definitions and Standards recommended to be adopted are set forth above.

Motion on Recommendation, Definitions, Standards, and Implementation Guide:

Adopt proposed NAESB WGQ Definitions [D1, D2, D3, D4 and D5] and Standards [S1 and S2] and NAESB WEQ Definitions [D1, D2, D3, D4 and D5] and Standards [S1 and S2], the proposed Implementation Guide for Electronic Tariff Filing (NAESB WGQ Standard [x.4.z] and WEQ Standard [X], dated January 25, 2008 as set forth in Appendix "A" attached hereto, and the recommendation form containing such.

Discussion on the motion:

Motion made by Ms. Davis and seconded by Ms. Bradford at the NAESB WGQ/WEQ eTariff Subcommittee meeting held on January 25, 2008.

Vote on the Motion

The vote on the motion was a **balanced vote** with the following tally by Segment. Specific votes of participants are set forth in the meeting minutes of January 25, 2008:

WGQ	Votes Cast			Balanced Vote			Abstain
	YES	NO	TOTAL	YES	NO	TOTAL	
End Users	1	0	1	1	0	1	0
LDCs	0	0	0	0	0	0	0
Pipeline	16	0	16	2	0	2	0
Producer	1	0	1	1	0	1	0
Services	3	0	3	2	0	2	0
Total	21	0	21	6	0	6	0

WEQ	Votes Cast			Balanced Vote			Abstain
	YES	NO	TOTAL	YES	NO	TOTAL	
Transmission	5	0	5	2	0	2	4
Generation	2	0	2	2	0	2	1
Marketers/Brokers	2	0	2	2	0	2	1
Distribution/LSEs	1	0	1	1	0	1	0
End Users	0	0	0	0	0	0	0
IGOs	4	0	4	2	0	2	1
Total	14	0	14	9	0	9	7

Motion Passes

Implementation Guide for Electronic Tariff Filing
NAESB WGQ Standards [x.4.z] and WEQ Standard [X]

[DATE]

(Draft Updated as of 1/25/08 eTariff Subcommittee)

DRAFT

**Updated Proposed Draft Implementation Guide
As of NAESB eTariff Meeting 01/25/2008**

Table of Contents

<u>Topic</u>	<u>Details</u>	<u>Page</u>
Table of Contents		2
Executive Summary		4
Business Process	Definitions and Standards	5
Technical Implementation of Business Process	General Purpose	6
	eTariff Filing Process Flow through the FERC eFiling Web Portal:	7
	Diagram	
	Description	8
	eTariff Submission Dataset Overview	10
	Data Dictionary Data Tables Overview	10
	Data Element Overview	11
	Details of Individual Data Elements	12
	Data Dictionary	21
	Data Table - Filing Data	22
	Data Table - Attachment Data	25
	Data Table - Tariff Record Content Data	27
	Code Values Dictionaries / FERC Reference Tables	31
	Code Values Tables	31
	FERC Reference Tables Provided in Downloadable Files	32
	Technical Specifications	39
	Electronic Delivery Specifications	39
	High Level Summary	39
	Format of Upload Data	39
	Login / Authentication Requirements	39
	Minimum Technical Capabilities of Browser Clients	40
	Error Code and Handling	40
	Security Specifications	41
	Testing Guidelines	41
	Maintenance	41
	XML Schema – Version 1	42
	Use Cases	
	Use Case Descriptions and Explanation	44

**Updated Proposed Draft Implementation Guide
As of NAESB eTariff Meeting 01/25/2008**

<u>Topic</u>	<u>Details</u>	<u>Page</u>
	Use Cases: Electric Industry	45
	Use Cases: Gas Industry	59
	Use Cases: Oil Industry	91
	Example XML eTariff Filing Package	101
Frequently Asked Questions		103

DRAFT

Executive Summary

This implementation guide is for use by entities required to submit tariffs, rate schedules, and service agreements together with supporting documentation to the Federal Energy Regulatory Commission (FERC) pursuant to Title 18 Code of Federal Regulations Parts 35, 154, 284, 300, 341 or other Parts as required by FERC. Filings which historically were submitted in hard copy should be submitted electronically according to the guidelines contained herein. To accomplish this, the components of the previous filings will need to be separated into various pieces of identifying information as defined by the data elements contained herein. These data elements and their accompanying data, are hierarchically organized by the XML schema and when compiled constitute an XML filing package for an electronic Tariff Filing. The XML filing package is then uploaded through a web portal. The following is a guide describing the various processes/mechanisms, data tables, code values/reference tables, and technical specifications used in the submission of such Tariff Filings.

DRAFT

Business Process

Definitions and Standards

Definitions

- D1 Tariff Submitter is the term used to describe any entity that is required to submit a Tariff Filing.
- D2 Tariff Filing is the term used to describe a compilation of all document(s), associated data and supporting documents that is required to be filed electronically by a Tariff Submitter pursuant to Title 18 Code of Federal Regulations Parts 35, 154, 284, 300, 341 or other Parts as required by the Federal Energy Regulatory Commission.
- D3 Tariff Record is the term used to describe the part of a Tariff Filing that consists of the data elements that relate to a sheet, section, or entire tariff, rate schedule, or service agreement that is required to be filed with the Federal Energy Regulatory Commission.
- D4 Sheet-Based Format and Section-Based Format are the terms used to describe the subdivision into sheets or sections, respectively, of a tariff, rate schedule, or service agreement for purposes of a Tariff Filing.
- D5 Whole Document Format is the term used to describe a tariff, rate schedule, or service agreement submitted as a single document within a Tariff Record for purposes of a Tariff Filing.

Standards

- S1 A Tariff Submitter should electronically submit a Tariff Filing pursuant to the requirements as set forth in NAESB WGQ Standard [x.4.z] / NAESB WEQ Standard [X].
- S2 For the electronic submission of a Tariff Filing, a tariff, rate schedule, or service agreement, and changes thereto, should be structured using one or more of the following methods:
- (i) Sheet-Based Format,
 - (ii) Section-Based Format, or
 - (iii) Whole Document Format

NAESB WGQ Standard [x.4.z] and NAESB WEQ Standard [x] Technical Implementation of Business Processes

GENERAL PURPOSE:

The purpose of the eTariff Submission implementation guide is to define the requirements for the submission of a Tariff Filing to the Federal Energy Regulatory Commission (FERC) in an electronic format such that the information can be stored in the FERC eTariff database and in eLibrary. The eTariff Submission dataset is used by an entity (Tariff Submitter) required to electronically submit Tariff Filings to the FERC pursuant to Title 18 Code of Federal Regulations Parts 35, 154, 284, 300, 341 or other Parts as required by FERC.

Set forth below is an explanation of how the eTariff Submission dataset works, including instructions describing the various processes / mechanisms, data tables, code values / reference tables, and technical specifications used in the submission of a Tariff Filing.

The eTariff Submission dataset is used to electronically submit a new, modify an existing, and withdraw or cancel a tariff, rate schedule, or service agreement. Within the FERC eTariff database, each Tariff Submitter will have one or more of its own database(s). A Tariff Submitter's database must contain at least one Tariff Record. A Tariff Record is a single occurrence (row) in a database (similar to a row in a spreadsheet) consisting of multiple data elements that relate to a sheet, section, or entire tariff, rate schedule, or service agreement.

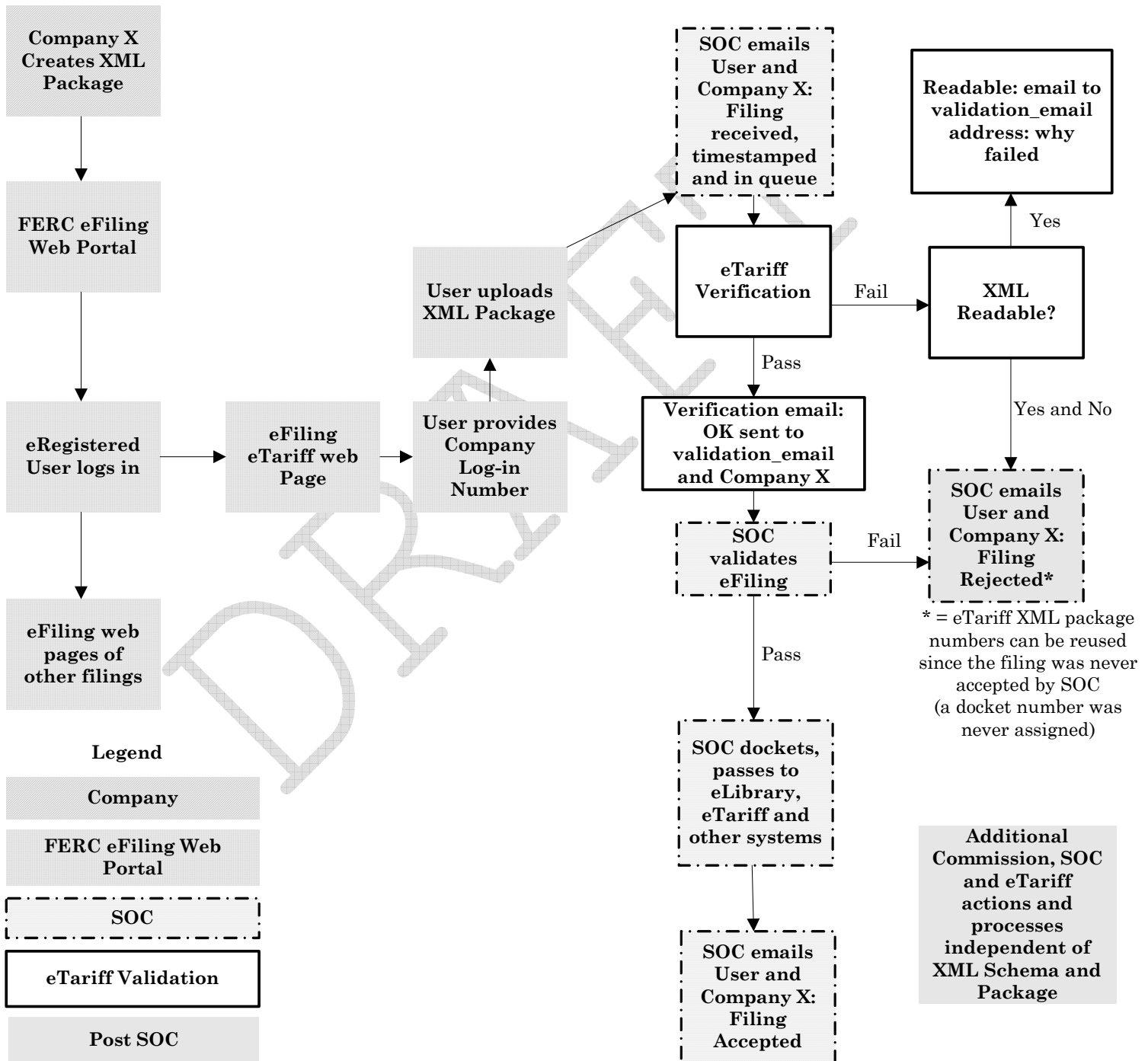
Sheet-Based Format and Section-Based Format describes the subdivision into sheets or sections, respectively, of a tariff, rate schedule, or service agreement for purposes of a Tariff Filing. Whole Document Format describes a tariff, rate schedule, or service agreement submitted as a single document within a Tariff Record for purposes of a Tariff Filing. A single database may contain one or more tariff(s), rate schedule(s), and service agreement(s) that are in different formats. For example, a tariff may be in a Sheet-Based Format or Section-Based Format, while the rate schedules may be in Whole Document Format.

The decision to use Sheet-Based Format, Section-Based Format, or Whole Document Format is left to the Tariff Submitter consistent with FERC regulations.

eTariff Filings Process Flow through the FERC eFiling Web Portal

DIAGRAM

The following is a high level diagram representing the overall process flow from the creation of an eTariff XML filing package by a Tariff Submitter through the Secretary of the Commission (SOC) acceptance or rejection of the filing. Following the diagram is a more detailed description of the submission to FERC and the processing the eTariff XML filing package.



Description of eTariff Filing Process Flow

Disclaimer:

The following summary represents FERC Staff's best understanding of how the eFiling process, including eTariff, will be designed. As of January 2008 the process has not been built, or fully designed, therefore FERC may change the process.

The FERC's eFiling *Reference Guide*, located at www.ferc.gov, provides a step-by-step set of instructions and expected results for the eFiling process.

- A User is a person authorized to submit a filing on behalf of a Tariff Submitter, as defined in NAESB WGQ Standard [D1] and NAESB WEQ Standard [D1]. The User must be an eRegistered party for eFiling.
- The User will login into the FERC eFiling portal.
- The User, upon successfully logging into the FERC eFiling portal, will be presented with the introductory screen indicating success in accessing the site, and presented with a link to the filing creation part of the site.
- Upon entering the filing creation site, the User will choose to make an eTariff filing.
- The eTariff portal will prompt the User to enter company login information (see Note 1 below). After successfully passing this step, the User will upload an eTariff XML filing package.
- Once the filing is uploaded, the eFiling web page indicates the Tariff Filing has been submitted.
- After the filing has been submitted, SOC will send a Confirmation of Receipt e-mail to the User and to the e-mail address on file with FERC for the company that logged in. This e-mail only acknowledges the receipt of the filing through the eFiling portal, provides a timestamp, and indicates that the filing is placed in the queue to be processed.
- The eTariff XML filing package will be validated programmatically by an eTariff verification process.
 - If the XML is unreadable, an e-mail will be sent by SOC to the User and to the e-mail address on file with FERC for the company logged-in (as a result of the XML being unreadable, the Validation e-mail address contained in the XML package cannot be obtained).

**Updated Proposed Draft Implementation Guide
As of NAESB eTariff Meeting 01/25/2008**

- If the verification is completed successfully, an e-mail will be sent to the Validation e-mail address provided in the eTariff XML package and to the e-mail address associated with the Company Identifier (or multiple Company Identifiers, as applicable (see Note 2 below)) for the affected database. This does not mean that the filing has been accepted by SOC.
- In the event the XML filing package can be read and the Validation e-mail can be obtained, but the data does not pass verification, (an e-mail will be sent to the Validation e-mail address provided in the eTariff XML filing package. This e-mail will provide information about the problems encountered during the verification process.
- FERC's SOC will send an e-mail to the User and the e-mail address on file with FERC for the company logged in. The e-mail will indicate that either the filing:
 - Has been accepted through SOC's process for filing and docketed (which does not guarantee that other filing deficiencies will not result in rejection later in the review processes within FERC). At this time the filing is passed on to eLibrary, eTariff and other FERC systems; or
 - Has been rejected and not docketed (see Note 3 below).

Notes:

- (1) As of January 2008, the FERC staff does not know whether the company that logs-in will be required to correlate to the company identified by the Company Identifier in the XML package).
- (2) As of January 2008, the FERC Staff does not know how joint filings will be handled. A "Joint Filing" refers to a Tariff Filing made on behalf of multiple parties with an identical tariff, rate schedule, or service agreement that is part of a single XML filing package. This is different from a shared tariff, rate schedule, or service agreement that refers to any situation where multiple parties are allowed to add or change the contents of a specific tariff, rate schedule, or service agreement, which is associated with one company_id.
- (3) If the filing is rejected at any point prior to receiving a docket number, the filing can be corrected and re-submitted using the same Filing Identifier. Once it is docketed it becomes part of the public record, the Filing Identifier cannot be re-used.

eTariff Submission Dataset Overview:

The eTariff Submission dataset consists of a Data Dictionary that contains three data tables, as more fully explained below. The data tables explain the data elements used when creating a single Tariff Filing. The dataset also includes Code Value Dictionaries used for populating some data elements with standardized code values. Once the Tariff Submitter has completed all of the requirements for the various data elements, the data will need to be compiled into a single XML file pursuant to the XML schema contained in the technical section below, and then zipped for submission to FERC via the eFiling / eTariff web portal.

Data Dictionary Data Tables Overview:

The eTariff Submission Data Dictionary consists of the following three data tables, which are presented in hierarchical order:

Filing Data Table:

This table includes, but is not limited to, the data elements that identify the company making the Tariff Filing, the Type of Filing, and the name of the database that is being created, modified, or cancelled. A single Tariff Filing may only have one set of Filing Data. The data in this table is required for each Tariff Filing.

Attachment Data Table:

This table includes, but is not limited to, the data elements that describe each of the attachments (e.g., transmittal letter, redline and clean versions of a tariff, rate schedule, or service agreement or portions thereof, and supporting materials) regardless of whether they are required or optional for the given Type of Filing, as set forth in the FERC rules and regulations. Currently, all Type of Filings will have at least one attachment and thus at least one set of attachment data elements (e.g., the transmittal letter).

Tariff Record Content Data Table:

This table includes, but is not limited to, the data elements that are used to uniquely identify the individual Tariff Records being submitted, the proposed effective date, the order in which the Tariff Records should be assembled, and the binary data and plain text for each Tariff Record. A single Tariff Filing may have multiple sets of Tariff Record Content Data. Based on the Type of Filing there may or may not be any Tariff Record Content Data.

**Updated Proposed Draft Implementation Guide
As of NAESB eTariff Meeting 01/25/2008**

Data Element Overview:

The data elements are the individual pieces of information or data that make up the Tariff Filing. Each will have a defined format, may be required, conditional or optional and may have restricted values. A data element may contain text or an electronic file (e.g., a .PDF file) as more fully explained in this implementation guide. An explanation of the individual data elements is provided in the data table portion of this implementation guide. In such tables, for each data element, the following information is provided:

- Business Name
- Element Name (this is the corresponding technical (metadata) name used in the XML schema)
- Definition of Data Element
- Field Format (length)
- Valid Values
- Usage / Responsibility and Conditions

A Tariff Filing is unique by the combination of the Company Identifier, Filing Identifier, and Tariff Identifier. A Tariff Record is unique by the combination of the Tariff Record Identifier, Option Code, Tariff Record Proposed Effective Date and Record Effective Priority Order.

Details of Individual Data Elements:

The following are the individual data elements provided in the same order as they appear in the Data Tables:

Note: For additional information on each data element, e.g., formatting requirements, see the definitions and other requirements as set forth in the data tables.

Filing Data Table Data Elements:

Schema Version:

This is the version of the XML schema used to create the specific Tariff Filing. The Schema Version and the actual schema will be published on the FERC website located at www.ferc.gov. Any changes to the schema will be made through a FERC notice or order.

Company Identifier:

A FERC-designated company identifier code used to define an entity registered with FERC to make Tariff Filings.

Tariff Identifier:

A unique identifier for a Tariff Submitter's database as it pertains to the database being modified by a Tariff Filing. A Tariff Submitter may have more than one active database. A database may contain one or more tariffs, rate schedules, or service agreements. A Tariff Identifier is supplied by the Tariff Submitter. Once a Tariff Identifier in a Tariff Filing has been accepted for filing by the SOC, it cannot be changed. A Tariff Identifier, even if cancelled, cannot be reused.

Tariff Title:

The name of the database assigned by the Tariff Submitter. The name of the database may not be changed. It is suggested that the Tariff Submitter's name not be included in the Tariff Title, as the Tariff Submitter's name is captured by the Company Identifier.

Filing Identifier:

A unique number identifying the subject Tariff Filing. The Tariff Submitter assigns the value. Filing Identifiers do not have to be assigned sequentially from one filing to the next. If a Tariff Filing is rejected by SOC prior to being docketed, the Filing Identifier may be reused.

Filing Title/Description:

The title given to the filing by the Tariff Submitter. Additional instructions may be published on the FERC website or via FERC notice or order. This data element will be used in eLibrary as part of the description of the Tariff Filing. The description may be edited by the SOC before or after posting in eLibrary.

Type of Filing Code:

A numeric code that identifies the Type of Filing being made as defined by FERC regulation. Only one Type of Filing can be submitted in a single Tariff Filing. The Type of Filing will dictate the data requirements for the subject filing. A list of allowable codes will be published on the FERC website located at www.ferc.gov, with changes communicated via a FERC notice or order. FERC will provide this information in CSV (comma separated value) and PDF formats which will be updated as regulations are modified.

**Updated Proposed Draft Implementation Guide
As of NAESB eTariff Meeting 01/25/2008**

Associated Filing Identifier:

Identifies the previous filing, if any, to which the subject filing pertains. The value provided is the Filing Identifier for the previous filing. When Associated Filing data is required, only one Associated Filing number can be provided.

Validation e-mail:

An e-mail address provided by the Tariff Submitter for notification of the results of the technical validations from the eTariff verification process. The Validation e-mail address does not have to be eRegistered with FERC.

Payment Confirmation Code:

For certain Type of Filings, the regulations require that a fee be paid along with the Tariff Filing. The payment of such fee is made at www.pay.gov. The confirmation number obtained after the successful payment is used to populate the Payment Confirmation Code. It is suggested that the Tariff Submitter be familiar with the www.pay.gov procedures or pre-pay a set of fees prior to making the Tariff Filing with FERC to avoid last minute delays that may prevent a timely filing.

Suspension Motion:

As of January 2008, this data element is only applicable to certain Part 154 filings made by interstate natural gas pipelines. It is not applicable to the electric or oil industries. This data element indicates whether or not the Tariff Records should automatically go into effect at the end of the applicable suspension period. If the value provided is no ("N"), the status of the Tariff Record will remain "Suspended" until such time as the Tariff Submitter files an appropriate motion filing. If the value provided is yes ("Y"), FERC's eTariff maintenance will automatically change the status from "Suspended" to "Effective" at the end of the suspension period with no further action required of the Tariff Submitter.

Attachment Data Table Data Elements:

Attachment Reference Code:

The data code identifies the type of attachment based on the Type of Filing. A list of allowable codes will be published on the FERC website located at www.ferc.gov, with changes communicated via a FERC notice or order. FERC will provide this information in CSV and PDF formats which will be updated as regulations are modified. This data element must be completed for each required attachment, regardless of whether a waiver is requested for the subject attachment.

Attachment Description:

This is the description of the individual attachment. For attachments that are pre-defined by FERC's regulations, the description should be the FERC pre-defined description. For attachments that are added by the Tariff Submitter that are "Other", the description can be any value desired. The Attachment Description is not required if a waiver has been requested for the subject attachment. The Attachment Descriptions provided will be displayed in eLibrary. Additional instructions regarding this data element may be published on the FERC website or via FERC notice or order.

**Updated Proposed Draft Implementation Guide
As of NAESB eTariff Meeting 01/25/2008**

Attachment Waiver Requested:

This data element indicates whether or not a waiver is requested. A FERC table providing rules for attachments is located at www.ferc.gov. This table indicates whether an attachment for a given Type of Filing can be waived. If an attachment is provided, the field is filled with no ("N"). If a waiver for the attachment is allowed, and the Tariff Submitter wants to request a waiver, the field is filled with a yes ("Y"). If "Y" is chosen, there is no need to attach the corresponding attachment. The Waiver Request code is solely for the purpose of passing the SOC's electronic filing validation checks. The actual request for waiver of the FERC's regulations and supporting documentation must be provided in the transmittal letter.

Attachment Document File Name:

This is the actual file name for the identified attachment provided by the Tariff Submitter. The file name is the name of the individual electronic document, including the extension. The name is chosen by the Tariff Submitter, unless otherwise provided in FERC instructions. The SOC's file name extension rules will be enforced. The Attachment Document File Name will appear in eLibrary. The Attachment Document File Name is not required if a waiver has been requested for the subject attachment.

Attachment Document:

This is the content of the actual attached document in a base64 bit encoded binary file. This binary file is in the native format of the saved file generated from the word processing software, or other FERC approved software format(s), in which the attachment was written. Base64 bit encoding is an additional step that must be applied to the binary file, using encoding software, enabling the file to be inserted into the XML. The Attachment Document is not required if a waiver has been requested for the subject attachment.

All Tariff Filing attachments must meet the same rules and requirements applicable to any document filed with FERC through its eFiling portal. Instructions with regard to the electronic format and content of electronic documents will be published on the FERC website located at www.ferc.gov or via FERC notice or order. However, the eTariff verification process does not enforce these rules, which are subject to other FERC processes.

A clean copy of the proposed tariff, rate schedule, or service agreement for posting in eLibrary is required for all Tariff Filings. The guidelines for this document are as follows:

Guidelines for the attachment that represents the clean copy of the proposed tariff, rate schedule, or service agreement, or portion thereof, for posting in eLibrary:

1. The electronic version of the clean copy of the proposed tariff, rate schedule, or service agreement, or portion thereof, must conform with the SOC's guidelines for electronically filed text documents, located at www.ferc.gov.
2. No information is required in the header or footer of the clean tariff, rate schedule, or service agreement, or portion thereof, to be posted in eLibrary. At its discretion, a Tariff Submitter may include information in the header or footer.

**Updated Proposed Draft Implementation Guide
As of NAESB eTariff Meeting 01/25/2008**

3. When using Whole Document Format and the Record Binary Data is submitted in PDF, a title page should be included containing the following information:
 - a. Tariff Submitter
 - b. FERC Tariff Program name. The current programs are:
 - i. FERC FPA Electric Tariff
 - ii. FERC PA Electric Tariff
 - iii. FERC NGA Gas Tariff
 - iv. FERC NGPA Gas Tariff
 - v. FERC ICA Oil Tariff
 - c. Tariff Title
 - d. Tariff Record Proposed Effective Date
 - e. Tariff Record Title
 - f. Option Code
 - g. Other information as the FERC may require by notice or order

4. The attachment that is the clean copy for posting in eLibrary must be identical with that provided in the Record Binary Data with the exception of the text in the header or footer information.

Attachment Content Type Code:

This is the numeric code representing the software format of the specific attachment. A list of allowable codes will be published on the FERC website located at www.ferc.gov with changes communicated via a FERC notice or order. FERC will provide this information in CSV and PDF formats which will be updated as necessary. The Attachment Content Type Code is not required if a waiver has been requested for the subject attachment.

Attachment Security Level:

This code is used to indicate the level of security for the specific attachment. For example, the code indicates whether the attachment is Public, Privileged, or if Critical Energy Infrastructure Information (CEII) classification is being requested. Certain attachments are required to be Public; however, those attachments may be submitted in redacted form along with an un-redacted copy of the attachment. Additional instructions may be published on the FERC website located at www.ferc.gov or via FERC notice or order. The Attachment Security Level is not required if a waiver has been requested for the subject attachment.

Tariff Record Content Data Table Data Elements:

Tariff Record Identifier:

This data element is a numeric value assigned by the Tariff Submitter to uniquely identify each Tariff Record. This identifier will not change with each revision within a given Tariff Record. The Tariff Record Identifier does not have to be sequential.

Option Code:

This data element permits a Tariff Submitter to propose alternate sets of Tariff Records (Option Sets) in a single Tariff Filing, with a request that FERC determine which Option Set to accept (i.e., place into effect). For each set of Tariff Records, the Tariff Submitter proposed options must start with "A" and increment sequentially through the alphabet, i.e., the Tariff Record can not have an option designated as "A" and another option designated as "C" without having an option of "B". If no alternative Options Sets are

**Updated Proposed Draft Implementation Guide
As of NAESB eTariff Meeting 01/25/2008**

being proposed, the value for this data element would be an "A". Each Option Set must contain all Tariff Records for the relevant Tariff Filing even if some of the Tariff Records are identical across the Option Sets. If FERC accepts Tariff Records from various Option Sets, it will require a compliance filing.

Tariff Record Title:

The Tariff Record Title is chosen by the Tariff Submitter for the individual Tariff Record. The Tariff Record Title may be changed in a subsequent Tariff Filing. If the Whole Document Format is used, the Tariff Record Title of the tariff, rate schedule, or service agreement should reflect the existing FERC naming conventions e.g., FERC Electric Tariff Volume Number 1, Rate Schedule X-5, Service Agreement No. 4 Under Tariff Volume No. 3.

Record Content Description:

This is a textual description of the Tariff Record. When the database is assembled, this field may be used to generate the database Table of Contents. The Record Content Description may be changed in a subsequent Tariff Filing.

Record Version Number:

This is a representation of the version (designation) of the Tariff Record, in the format of x.y.z, where "x" represents revision number for the given Tariff Record, "y" delineates that it is a substitute for a previously filed Tariff Record, and "z" indicates that it is a "squeeze" Tariff Record. A "squeeze" Tariff Record occurs when a Tariff Record needs to be made effective on a date which occurs between the effective dates of two Tariff Records with the same Tariff Record Identifier already on file with FERC. Commonly, this occurs when a Tariff Record is suspended and subsequent Tariff Records need to be made effective prior to when the suspended Tariff Record becomes effective. The Tariff Submitter may choose to use only "x" for all revised, substitute, and squeezed Tariff Records. In that case, the "y" and "z" should be zero.

This information is not used to determine actual status of a Tariff Record. This field will not be checked by the eTariff verification process. FERC will not use it in any automated fashion. This field is provided for ease of business and FERC referencing and will only be used for display.

Guidelines for the Record Version Number:

1. Each version of a Tariff Record must have a unique Record Version Number.
2. The "x", "y" and "z" components:
 - are integers
 - begin with 0.0.0
 - increment separately by one
3. Record Version Numbers are not required for the following Type of Filings and Tariff Record changes:
 - Withdrawal
 - Motions to place Tariff Records into effect or delay effectiveness

Record Narrative Name:

This is an optional data element that provides the Tariff Submitter the ability to include an additional narrative description of the Tariff Record. As of January 2008, FERC has not determined how this information will be utilized.

**Updated Proposed Draft Implementation Guide
As of NAESB eTariff Meeting 01/25/2008**

Tariff Record Collation Value:

This is a value provided by the Tariff Submitter that determines the order in which the Tariff Records are compiled. In other words, it will provide the appropriate sequencing of the Tariff Records. For each Tariff Record:

- Use a unique Tariff Record Collation Value, and
- It is recommended that in the preparation of a new database, a sufficient gap (e.g., increments of 1,000) be provided between the collation values to allow for future insertion of new Tariff Records.

A Tariff Record Collation Value may be modified as part of another Tariff Filing.

Example:

Tariff Record	Collation Value
Common Service Provisions	2000
Definitions	3000
Table of Contents	1000

The Tariff Records would be assembled in the following order:

Table of Contents
Common Service Provisions
Definitions

Tariff Record Parent Identifier:

The Tariff Record Parent Identifier provides the hierarchical structure to identify the higher-level part of the database to which the subject Tariff Record belongs.

When a database is first organized, thought should be given to how the electronic Table of Contents will appear. A Tariff Record that has no parent has a Tariff Record Parent Identifier of "0", i.e., top level record. If the value provided is not "0", it must be a valid Tariff Record Identifier of another Tariff Record. It is suggested by FERC that no more than 7 levels under a top level record be used.

A Tariff Record Parent Identifier may be modified as part of another Tariff Filing.

Tariff Record Proposed Effective Date:

This indicates the date the given Tariff Record is proposed to go into effect. It is used to determine which version of a Tariff Record change is effective in accordance with applicable law, regulations and business practices. The data in this field is subject to FERC review and disposition, which will impact the status of a Tariff Record for any given period of time.

If the effective date is not known at the time of the filing, such as the effective date is contingent on FERC approval, the closing of a plant sale, etc., the date of 12/31/9999 must be used. Use of this option may have regulatory consequences depending on the FERC Tariff Program.

Changing a Tariff Record Proposed Effective Date requires a Tariff Filing.

**Updated Proposed Draft Implementation Guide
As of NAESB eTariff Meeting 01/25/2008**

Record Effective Priority Order:

A positive integer assigned by the Tariff Submitter that indicates the order of multiple changes for a given Tariff Record (i.e., the same Tariff Record Identifier) proposed to go into effect on the same date. The Tariff Record with the highest Record Effective Priority Order will supersede any other Tariff Records with the same Tariff Record Identifier also proposed to be effective for that date. The value must be unique across Tariff Records with the same Tariff Record Identifier and Tariff Record Proposed Effective Date. It is recommended that the default Record Effective Priority Order value be set relatively high, e.g., 500, thereby allowing subsequent Tariff Filings with Record Effective Priority Orders either before or after the initial Record Effective Priority Order.

Record Content Type Code:

This is the numeric code representing the software format of the specific Record Binary Data. A list of allowable codes will be published on the FERC website located at www.ferc.gov with changes communicated via a FERC notice or order. FERC will provide this information in CSV and PDF formats which will be updated as necessary.

Record Binary Data:

This is the content of the Tariff Record in a Base64 bit encoded binary file. This binary file is in the native format of the saved file generated from the word processing software, or other FERC approved software format(s), in which the Tariff Record content was written. Base64 bit encoding is an additional step that must be applied to the binary file, using encoding software, enabling the file to be inserted into the XML.

All Record Binary Data must meet the same rules and requirements applicable to any document filed with FERC through its eFiling website. Instructions with regard to the electronic format and content of electronic documents will be published on the FERC website located at www.ferc.gov or via FERC notice or order. However, the eTariff verification process does not enforce these rules, which are subject to other FERC processes.

Record Plain Text:

This is the plain text version of the content of the Record Binary Data. Formatting and other binary values are stripped from this content. This field will be used for searching and indexing.

Record Change Type:

This data element indicates the type of change / revision / maintenance action being requested for the Tariff Record, e.g., new, change, cancel, etc. Some Type of Filings are restricted to the choice of Record Change Types.

Business descriptions of the Record Change Types are as follows:

- NEW: To create a new Tariff Record Identifier.
- CHANGE: To change an existing Tariff Record. Modifications to a Tariff Record that has been cancelled may be made if the Tariff Record Proposed Effective Date is prior to the cancellation date.
- CANCEL: Used to cancel a Tariff Record Identifier. Once cancelled, the Tariff Record Identifier cannot be changed with a filing that contains a Tariff Record Proposed Effective Date that is after the accepted date of cancellation. Cancellation of a Tariff Record Identifier that is a Tariff

**Updated Proposed Draft Implementation Guide
As of NAESB eTariff Meeting 01/25/2008**

Record Parent Identifier will automatically cancel all related child Tariff Record Identifiers.

Cancellation of a Tariff Record Identifier should not be confused with cancelling a Tariff Identifier, which requires the submission of a cancellation Type of Filing.

WITHDRAW: Used to withdraw a pending or suspended Tariff Record. The withdrawal of a "NEW" Tariff Record Parent Identifier will automatically cancel all "NEW" children. Withdrawal of "CHANGE" Tariff Records requires identification of each changed Tariff Record to be withdrawn. Filings to withdraw Tariff Records that are no longer pending or suspended will result in a verification error and SOC rejection. "WITHDRAW" can only be used with a withdrawal Type of Filing. Depending on the program, withdrawal's effectiveness may be reflected automatically by FERC's eTariff database maintenance. At a minimum, the Tariff Submitter needs to provide the following data elements:

- Tariff Record Identifier
- Option Code
- Record Change Type
- Associated Filing Identifier
- Associated Record Identifier
- Associated Option Code

PRO FORMA: Used to submit a Tariff Record proposal without invoking statutory processing timelines. The Tariff Submitter should include a Tariff Record Proposed Effective Date, which is used for database maintenance. Pro Forma Tariff Records cannot be converted to effective Tariff Records by FERC, and should be resubmitted as actual Tariff Records.

Associated Filing Identifier:

Used to provide the Tariff Filing Identifier associated with a previously filed Tariff Record that the subject Tariff Record replaces. This field is only populated when the Associated Filing Identifier data element (in the Filing Data Table) is populated. This data element is used in conjunction with the Associated Record Identifier and the Associated Option Code (below). This is not applicable to all Type of Filings.

An Associated Filing Identifier for the subject Tariff Record does not have to be the same as the Associated Filing at the filing level used in this Tariff Filing.

Amendment and Compliance Type of Filings permit multiple Associated Filing Identifiers, however only one Associated Filing Identifier may be provided for each Tariff Record.

Associated Record Identifier:

This field is used in conjunction with the Associated Filing Identifier and the Associated Option Code to provide the Tariff Record Identifier of the Tariff Record which the subject Tariff Record replaces. It should refer to a Tariff Record Identifier in a previous filing, and this value should be that record's Tariff Record Identifier.

**Updated Proposed Draft Implementation Guide
As of NAESB eTariff Meeting 01/25/2008**

Associated Option Code:

This field is used in conjunction with the Associated Filing Identifier and the Associated Record Identifier. The value should be the correct Option Code for the Associated Record Identifier.

DRAFT

DATA DICTIONARY

NAESB WGQ Standard [x.4.z] and NAESB WEQ Standard [x]

Introduction

The following three Data Tables make up the Data Dictionary for electronic Tariff Filings. Conceptually, the purpose of each table is:

- Filing Data - describes the overall filing.
- Attachment Data - supporting documents required by specific Type of Filing or additional documents supplied by the Tariff Submitter.
- Tariff Record Content Data - the actual “text” or “content” of the tariff, rate schedule, or service agreement along with its associated metadata.

The data elements contained in the three data tables are presented in the order in which they appear in the XML schema.

DRAFT

**Updated Proposed Draft Implementation Guide
As of NAESB eTariff Meeting 01/25/2008**

Filing Data

This data defines the Tariff Filing and this data will be provided with each Tariff Filing.

Business Name (1)	Element Name (2)	Definition of Data Element (3)	Field Format (length) (4)	Valid Values (5)	Usage Responsibility Conditions (6)
Schema Version	schema_version	The version of the XML schema used to create the specific Tariff Filing.	Numeric (10)	Any number between 1 and 2,147,483,648	Required.
Company Identifier	company_id	A FERC-designated Company Identifier code used to identify an entity required to submit Tariff Filings to FERC pursuant to Title 18 Code of Federal Regulations Parts 35, 154, 284, 300, 341 or other Parts as required by FERC.	Alphanumeric (10)	Free form text	Required. Assigned by FERC and provided in the Tariff Filing by the Tariff Submitter.
Tariff Identifier	tariff_id	A unique identifier for the Tariff Submitter's database assigned by the Tariff Submitter as it pertains to the database being modified by the Tariff Filing. This can be any value in the allowable range of numbers, but it must be unique for each Tariff Submitter's database. A Tariff Submitter may have more than one active database.	Numeric (10)	Any number between 1 and 2,147,483,648	Required. Assigned and provided by the Tariff Submitter. The Tariff Identifier of the database cannot change.
Tariff Title	tariff_title	The name of the database assigned by the Tariff Submitter.	Alphanumeric (100)	Free form text.	Required only when creating a new database. After the initial submission, the Tariff Identifier is used, and this data element may be left blank. Assigned and provided by the Tariff Submitter. The Tariff Title of the database cannot change.
Filing Identifier	filing_id	A unique identifier for the subject Tariff Filing for the Tariff Submitter.	Numeric (10)	Any number between 1 and 2,147,483,648	Required. Assigned and provided by the Tariff Submitter. This can be any value in the valid range of numbers, but it must be unique across all Tariff Filings for a specific Tariff Submitter.

**Updated Proposed Draft Implementation Guide
As of NAESB eTariff Meeting 01/25/2008**

Business Name (1)	Element Name (2)	Definition of Data Element (3)	Field Format (length) (4)	Valid Values (5)	Usage Responsibility Conditions (6)
Filing Title / Description	filing_title	The title given to the Tariff Filing by the Tariff Submitter.	Alphanumeric (80)	Free form text.	Required. Assigned and provided by the Tariff Submitter. This will not be used in FERC's eTariff system and will be used in eLibrary.
Type of Filing Code	filing_type	A code that identifies the specific FERC defined type of Tariff Filing as set forth in Title 18 Code of Federal Regulations Parts 35, 154, 284, 300, 341 or other Parts as required by the Commission (e.g., initial, compliance, surcharge, etc.). The Type of Filing will dictate the data requirements for the subject filing	Numeric (10)	See list of codes posted @ www.ferc.gov	Required.
Associated Filing Identifier	associated_filing_id	The Filing Identifier for the previous Tariff Filing to which the subject filing pertains (i.e., associated).	Numeric (10)	Any number between 1 and 2,147,483,648	Conditional. Assigned and provided by the Tariff Submitter. This is not applicable to all Type of Filings. Where it is used, it must refer to a previous Tariff Filing, and the value should be that previous Tariff Filing's "filing_id" value. An example might be the subject Tariff Filing is a compliance (or withdrawal) filing and the previous, applicable Tariff Filing to which it pertains must be identified in this field.
Validation e-mail	validation_email	The email address provided by the Tariff Submitter for notification of whether the Tariff Filing meets the technical requirements such that it can be passed on to the Secretary of the Commission (SOC) for further processing.	Alphanumeric (100)	Free form text	Required.
Payment Confirmation Code	pay_confirm_code	The confirmation number for the associated fee that has been previously submitted via www.pay.gov , as applicable.	Alphanumeric (15)	Free form text	Conditional based on the Type of Filing. Required if payment is required by the regulations. Provided by the Tariff Submitter.

**Updated Proposed Draft Implementation Guide
As of NAESB eTariff Meeting 01/25/2008**

Business Name (1)	Element Name (2)	Definition of Data Element (3)	Field Format (length) (4)	Valid Values (5)	Usage Responsibility Conditions (6)
Suspension Motion	suspend_motion	An indication of whether or not the Tariff Records should automatically go into effect at the end of the applicable suspension period.	Character (1)	"Y" or "N"	Conditional based off of Type of Filing. Provided by the Tariff Submitter.

DRAFT

**Updated Proposed Draft Implementation Guide
As of NAESB eTariff Meeting 01/25/2008**

Attachment Data

This defines data for each supporting / attached document that is either (1) being provided with the Tariff Filing or (2) for which a waiver is requested.

Business Name (1)	Element Name (2)	Definition of Data Element (3)	Field Format (length) (4)	Valid Values (5)	Usage Responsibility Conditions (6)
Attachment Reference Code	att_ref_code	The FERC assigned reference code for each attachment type.	Numeric (10)	See list of codes posted @ www.ferc.gov	Required. Provided by the Tariff Submitter. If the attachment pertains to a specific document defined for the Type of Filing, the appropriate document reference code must be used. Note: The code may be different for each Type of Filing.
Attachment Description	att_desc	The title given to the attachment submitted by the Tariff Submitter.	Alphanumeric (80)	Free form text.	Required. For attachments that are pre-defined by FERC's regulations, the description will be the FERC pre-defined description. For other attachments that are added by the Tariff Submitter, the description can be any value desired. These descriptions will be displayed in eLibrary as assigned and provided by the Tariff Submitter.
Attachment Waiver Requested	att_waiver_request	An indication of whether or not the Tariff Submitter is requesting a waiver for submission of the attachment specified as required by the Attachment Reference Code.	Character (1)	"Y" - waiver is requested "N" or " " - waiver not requested	Conditional on the Type of Filing – required for those attachments that are required by regulations. Assigned and provided by the Tariff Submitter. For each document that is requested to be waived, the Attachment Reference Code (above) is provided, and a value of "Y" is entered here. If an actual document is being provided, this value should be "N" or " ".
Attachment Document	att_binary_data	This is the actual document content.	Binary (50 MB)	Binary Base64 bit encoded file content	Conditional on the Type of Filings. Required if Attachment Document is required by regulation and waiver of such is not requested in the field "Attachment Waiver Requested." Provided by the Tariff Submitter.

**Updated Proposed Draft Implementation Guide
As of NAESB eTariff Meeting 01/25/2008**

Business Name (1)	Element Name (2)	Definition of Data Element (3)	Field Format (length) (4)	Valid Values (5)	Usage Responsibility Conditions (6)
Attachment Document File Name	att_filename	The complete file name, including the extension, assigned by the Tariff Submitter of the Attachment Document being attached.	Alphanumeric (60)	Free form text.	If the Attachment Waiver Requested is "Y", Attachment Document File Name is not required. Assigned and provided by the Tariff Submitter if not otherwise pre-defined by FERC's regulations or instructions. This file name will be used to identify the document and the extension will be used for retrieval purposes. Valid file names cannot include special characters such as: ? / * \ " ' > <
Attachment Content Type Code	att_content_type_code	The numeric code representing the software format of the specific Attachment Document.	Numeric (10)	See list of codes posted @ www.ferc.gov	
Attachment Security Level	att_security_level	The level of security requested for the specific attached document corresponding to the applicable Attachment Document.	Character (1)	"P" - Public "M" - Privileged "X" - Critical Energy Infrastructure Information See list of codes posted @ www.ferc.gov	Conditional based on Type of Filing. Required when the Attachment Document is provided. Certain Attachment Documents are required to be Public. Assigned and provided by the Tariff Submitter.

**Updated Proposed Draft Implementation Guide
As of NAESB eTariff Meeting 01/25/2008**

Tariff Record Content Data

This provides the data for each Tariff Record.

Business Name (1)	Element Name (2)	Definition of Data Element (3)	Field Format (length) (4)	Valid Values (5)	Usage Responsibility Conditions (6)
Tariff Record Identifier	record_id	An identifier for the Tariff Record within a given database that will not change as a result of revisions to the content of the Tariff Record (with same or different effective dates). No two different Tariff Records in the same database may have the same Tariff Record Identifier.	Numeric (10)	Any number between 1 and 2,147,483,648	Required. Assigned by the Tariff Submitter. Each Tariff Record in the database has an associated Tariff Record Identifier number that does not change with each revision within a given database. The Tariff Record Identifier is not used for collation and does not have to be assigned sequentially.
Option Code	option_code	An identifier that designates the alternative Tariff Record option being submitted. An identifier that designates the primary Tariff Record as "A" and designates all alternative Tariff Record options being submitted, if any, sequentially in alphabetic order.	Character (1)	"A" thru "Z" allowed.	Required. Provided by the Tariff Submitter. Default (no more than one option is provided) is "A".
Tariff Record Title	record_title	The name of the Tariff Record contents.	Alphanumeric (60)	Free form text.	Required, if Tariff Record is a first-level Parent or in a Whole Document Format. Optional in other cases. Assigned by the Tariff Submitter. This field may be used in a database generated Table of Contents.
Record Content Description	record_content_desc	Textual description of the Tariff Record.	Alphanumeric (25)	Free form text.	Required. Assigned by the Tariff Submitter. This field may be used in a database generated Table of Contents.

**Updated Proposed Draft Implementation Guide
As of NAESB eTariff Meeting 01/25/2008**

Business Name (1)	Element Name (2)	Definition of Data Element (3)	Field Format (length) (4)	Valid Values (5)	Usage Responsibility Conditions (6)
Record Version Number	record_version_number	A representation of the version (designation) of the Tariff Record.	Alphanumeric (10)	x.y.z x = revision number y = substitute number z = "squeezed" number	Conditional based on Type of Filing. This information is not used to determine actual status of a Tariff Record. It is not used in any automated fashion other than display (possibly in the table of contents). This data is provided for ease of business and FERC referencing only.
Record Narrative Name	record_narrative_name	An additional narrative description of the Tariff Record.	Alphanumeric (254)	Free form text	Optional.
Tariff Record Collation Value	collation_value	A value that will determine the sort order in which the Tariff Records are merged.	Numeric (25)	Any number between 1 and 2,147,483,648	Required. Assigned by the Tariff Submitter.
Tariff Record Parent Identifier	record_parent_id	Provides the hierarchical structure to identify the higher-level part of the database to which this Tariff Record belongs.	Numeric (10)	Any number between 0 and 2,147,483,648	Required. Assigned by the Tariff Submitter. If the Tariff Submitter chooses not to use the functionality of this field, they must still populate the field with "0". Otherwise, the value must be a valid Tariff Record Identifier.
Tariff Record Proposed Effective Date	proposed_effective_date	The proposed effective date for the specified Tariff Record.	Date (10)	YYYY-MM-DD	Required. Assigned by the Tariff Submitter.

**Updated Proposed Draft Implementation Guide
As of NAESB eTariff Meeting 01/25/2008**

Business Name (1)	Element Name (2)	Definition of Data Element (3)	Field Format (length) (4)	Valid Values (5)	Usage Responsibility Conditions (6)
Record Effective Priority Order	priority_order	A positive integer that directs which of multiple changes of a given Tariff Record (the same Tariff Record Identifier) proposed to go into effect on the same day, will take precedence, i.e., the Tariff Record with the highest numeric value will supersede any other Tariff Records with the same Record Identifier also proposed to be effective for that day.	Numeric (10)	Any number between 1 and 2,147,483,648	Required. Assigned by the Tariff Submitter. Default value should allow for priority values below and above the Tariff Record of a specific Tariff Record Proposed Effective Date initial value (for example: 500). The value must be unique for a specific Tariff Record for a specific Tariff Record Proposed Effective Date. When the current database is assembled for a particular effective date and there are multiple Tariff Records with the same Record Identifier and the same effective date, the approved Tariff Record for that effective date with the highest Record Effective Priority Order number will be the effective Tariff Record.
Record Content Type Code	record_content_type_code	The version of the software used to create the specific Tariff Record.	Numeric (10)	See list of codes posted @ www.ferc.gov	Conditional based on Type of Filing and/or structure of database. Provided by the Tariff Submitter.
Record Binary Data	record_binary_data	The actual Tariff Record content.	Binary (10 MB)	Binary Base64 bit encoded file content	Conditional based on Type of Filing and/or structure of database. Provided by the Tariff Submitter.
Record Plain Text	record_plain_text	The plain text version of the content of the Record Binary Data. Formatting and other binary values are stripped from this content.	Alphanumeric (10 MB)	Free form text	Conditional based on Type of Filing and/or structure of database. Provided by the Tariff Submitter.
Record Change Type	record_change_type	A description of the type of change being requested.	Alphanumeric (15)	See Code Values Dictionary	Required. Assigned by the Tariff Submitter. Used to identify the appropriate Tariff Record maintenance action. Some Type of Filings restrict the choice of Record Change Types.

**Updated Proposed Draft Implementation Guide
As of NAESB eTariff Meeting 01/25/2008**

Business Name (1)	Element Name (2)	Definition of Data Element (3)	Field Format (length) (4)	Valid Values (5)	Usage Responsibility Conditions (6)
Associated Filing Identifier	associated_filing_id	The Tariff Filing Identifier associated with a previously filed Tariff Record which the subject Tariff Record replaces. Note: This is used in conjunction with the Associated Record Identifier and the Associated Option Code (below).	Numeric (10)	Number between 1 and 2,147,483,648 used by the Tariff Submitter in a previous Tariff Filing	Conditional. Assigned by the Tariff Submitter. This is not applicable to all Type of Filings. Where the Type of Filings permits or requires its use, it must refer to a previous Tariff Filing, and the value should be that previous Tariff Filing's Filing Identifier.
Associated Record Identifier	associated_record_id	This is used to associate the specific content with a previously filed Tariff Record. For example, withdrawal Tariff Filings must identify the content being requested to be withdrawn. Note: This is used in conjunction with the Associated Filing Identifier (above) and the Associated Option Code (below).	Numeric (10)	Number between 1 and 2,147,483,648 used by the Tariff Submitter for the targeted Tariff Record Identifier	Conditional. Assigned by the Tariff Submitter. This is not applicable to all Type of Filings. Where it is used, it must refer to a Tariff Record Identifier in the associated filing.
Associated Option Code	associated_option_code	An identifier that designates the alternative associated record option of a previously filed Tariff Record. Note: This is used in conjunction with the Associated Filing Identifier and the Associated Record Identifier (above).	Character (1)	"A" thru "Z" used by the Tariff Submitter for the targeted Tariff Record Identifier	Conditional. Assigned by the Tariff Submitter. Where it is used, the value should be the applicable Option Code value for the Associated Record Identifier.

**Updated Proposed Draft Implementation Guide
As of NAESB eTariff Meeting 01/25/2008**

Code Values Dictionaries and FERC Reference Tables

Certain data elements need to be populated with standardized responses (code values). Some of these data elements lend themselves to simple code value tables as provided below. For others, FERC will provide reference tables in a downloadable CSV file. After the following data element code values tables is an extensive explanation of the FERC reference tables.

Data Element: Attachment Waiver Requested

Code Value	Code Value Description
N	No, a waiver of the attachment is not being requested.
Y	Yes, a waiver of the attachment is being requested.

Data Element: Option Code

Code Value	Code Value Description
A	Default for the primary Tariff Record.
B, C, through Z	Subsequent codes used for alternatives and must be provided in alphabetical order.

Data Element: Record Change Type - (code values is case sensitive)

Code Value	Code Value Description
CANCEL	Used to cancel a Tariff Record Identifier.
CHANGE	Used to change an existing Tariff Record.
NEW	Used to create a new Tariff Record Identifier.
PRO FORMA	Used to submit a Tariff Record proposal without invoking statutory processing timelines.
WITHDRAW	Used to withdraw a pending or suspended Tariff Record.

Data Element: Suspension Motion

Code Value	Code Value Description
N	No, the filing should not become effective without a separate filing to request such.
Y	Yes, the Tariff Record(s) should go into effect at the end of the suspension period.

FERC Reference Tables Provided in Downloadable Files

FERC will provide reference tables in downloadable files for the remaining data elements which have standardized code values, as well as to provide information to assist in the development of a Tariff Submitter's document management system and the creation of a Tariff Filing. The downloadable files will contain the appropriate codes to be used to populate the identified XML data elements (schema) and/or contain data that can be used to assist in error processing, provide FERC validation information and/or FERC business rules used to process the Tariff Filing.

This section is composed of three parts:

- (1) A list of the FERC File Downloads and their contents;
- (2) The Format of the FERC File Download Files; and
- (3) A description of the data elements contained in the FERC File Downloads

(1) List of FERC File Downloads

The following is a list of the downloadable files that FERC will post on its website, located at www.ferc.gov. The files listed will be available in CSV and may be provided in PDF formats.

- Type of Filing (`filing_type`) – code values and rules of use
- Attachment Reference Code (`att_ref_code`) – code values and rules of use
- Attachment Content Type Code (`att_content_type_code`) – code values
- Attachment Security Level (`att_security_level`) – code values
- Record Content Type Code (`record_content_type_code`) – code values
- Validation error codes provided by FERC.

(2) Format of the FERC File Downloads

The downloadable files posted on the FERC website will be formatted in CSV. The first row of the file will be the title of each of the columns and will determine the order in which the corresponding data is to appear in all subsequent rows. The following are the CSV file format specifications:

- Rows are separated by a carriage return/line feed (CRLF).
- Fields are separated by commas.
- When a field contains a comma, the field will be enclosed by double-quotes.
- When numeric data contains decimal precision, the decimal point will be included within the field.
- When a field contains no data, the empty field will contain two delimiters next to each other. Note that there will be no blank spaces between the delimiters.

(3) Description of the Data Elements contained in the FERC File Downloads

FERC's Tariff Filing requirements are the function of many statutory, regulatory and business processes. A Tariff Filing must satisfy many rules simply to be considered a filing acceptable for processing by the FERC. How FERC maintains the contents of Tariff Filings is a function of these statutory, regulatory and business rules, plus its own findings with regard to the merits of the Tariff Submitter's proposal(s). FERC has created software for internal purposes of automating the Tariff Filing review process and much of the eTariff maintenance process. It is in the interest of the FERC that Tariff Submitters create electronic Tariff Filings that are compatible with FERC's automated Tariff Filing and eTariff maintenance processes. For that reason, FERC provides the public information on additional data elements that it uses as part of its processes. This information may be used by Tariff Submitter's document management system to add functionality to the processes and to improve accuracy of the Tariff Filings. FERC will not review or certify any Tariff Submitter's document management system.

Following is a description of each of the downloadable files and the data contained in such files (both eTariff XML data elements and non-eTariff data elements used by FERC). The names of the columns that will be contained in the downloadable files are reflected below and are either shown in **bold** text (XML schema data elements) or in *italics* (non-XML schema data elements).

- **Type of Filing** (*filing_type*) - This file contains thirteen columns:
 1. **filing_type** – The values are used to populate the *filing_type* XML data element for the subject Tariff Filing. The statutes, regulations and business rules provide for many different filing types. Every Type of Filing has a unique code that is randomly generated by FERC. It is used to direct the software to a set of data elements that describe that filing type.
 2. *description* – Description of the *filing_type*. In this column FERC will provide its description for each Type of Filing code.
 3. *prog_code*: The “program code” refers to the different FERC Tariff Programs. As of January 2008, FERC has divided the various Type of Filings into five programs which are reflected by the six values below. FERC will allow the Tariff Submitter to determine which Type of Filing codes are relevant based on its FERC Tariff Programs. Within the five programs are dozens of different Type of Filings. The values in this column are defined below:
 - E = Federal Power Act Electric (Traditional Cost of Service and Market Based Rates) Public Utilities
 - F = Power Administrations
 - G = NGA Gas Pipelines
 - K = NGPA 311 Gas Pipelines
 - M = Federal Power Act Electric (Market Based Rate) Public Utilities
 - O= Oil Pipelines

FERC assigns one of the above program codes to a Tariff Submitter at the time the Tariff Submitter registers with FERC as part of the company registration

**Updated Proposed Draft Implementation Guide
As of NAESB eTariff Meeting 01/25/2008**

process. The Tariff Submitter can only make Tariff Filings with one of the Type of Filing codes that are under the same program code as the Tariff Submitter.

Note: The program code of "M" is a subset of the "E" program code unique for FPA Tariff Submitters that only sell power at Market Based Rates. Tariff Submitters with "E" and "M" program codes will need to change their program code through the FERC company registration process if it requires access to Type of Filing codes not available in its program.

4. *new_type* – This column will indicate either yes (Y) or no (N). This reflects a type of Baseline category Type of Filing that requires both the creation of a new Company Identifier and a new Tariff Identifier. A more detailed explanation of the broad category of Baseline is provided below.
5. *refiled_type* – This column will indicate either yes (Y) or no (N). This reflects a type of Baseline category Type of Filing wherein the Tariff Submitter already has a pre-existing database or collection of paper tariffs, rate schedules, or service agreements and is requesting a new Tariff Identifier. A more detailed explanation of the broad category of Baseline is provided below.
6. *compliance_type* – This column will indicate either yes (Y) or no (N). This reflects a Type of Filing more fully explained below for the broad category of Compliance type.
7. *amendment_type* – This column will indicate either yes (Y) or no (N). This reflects a Type of Filing more fully explained below for the broad category of Amendment type.
8. *motion_type* – This column will indicate either yes (Y) or no (N). This reflects a Type of Filing more fully explained below for the broad category of Motion type.
9. *withdraw_type* – This column will indicate either yes (Y) or no (N). This reflects a Type of Filing more fully explained below for the broad category of Withdraw type.
10. *report_type* – This column will indicate either yes (Y) or no (N). This reflects a Type of Filing more fully explained below for the broad category of Report type.
11. *cancellation_type* – This column will indicate either yes (Y) or no (N). This reflects a Type of Filing more fully explained below for the broad category of Cancellation type.
12. *suspend_motion_response* – This column will indicate either yes (Y) or no (N). FERC may suspend certain Type of Filings. For some programs, the Tariff Submitter is required to inform FERC whether or not it is submitting a motion to place suspended Tariff Records into effect at the end of the suspension period. The download file will indicate the Type of Filings requiring such a data element be populated by the Tariff Submitter.

**Updated Proposed Draft Implementation Guide
As of NAESB eTariff Meeting 01/25/2008**

13. *status_change_timeout* – Many Type of Filings must be acted upon by FERC by a certain number of days from the date of the Tariff Filing. This data element shows the number of days from the date of the filing before the FERC internal system will automatically change the status in the absence of a FERC order.

Explanation of Type of Filing Categories:

Different Type of Filings have different business processes as required by statute, regulation or business practice. FERC breaks down the dozens of different Type of Filings into eight broad categories that have similar business processes. The eight broad categories are explained below however, not all of them have individual columns in the download file.

The eight broad categories of Type of Filings are defined by FERC as:

- Baseline - This category is used for a Type of Filing that requires a new Tariff Identifier. Every Tariff Submitter establishing a new Tariff Identifier must start with a Baseline filing. However, the automated processing is different depending on whether the requested action is “New” or “Refiled” as more fully explained in the description above for the columns “*new_type*” and “*refiled_type*”:
- Normal - This category is used for a Type of Filing wherein the Tariff Submitter is the proponent of the change(s) in a tariff, rate schedule, or service agreement. This business process rule will be the most commonly used by Tariff Submitters. FERC has rules for some programs, such as when a Type of Filing is appropriate relative to various indices, such as the status of a Tariff Filing or Tariff Identifier. Statutory, regulatory and business rules apply to the status of a proposed change(s) in a tariff, rate schedule, or service agreement. Many of these rules are automated to change the status conditions in the appropriate circumstances. A Type of Filing is a “normal” type if the data in the columns on the download file for all category types (*motion_type*, *report_type*, *amendment_type*, etc.) are set to “N”.
- Compliance - This category is used for a Type of Filing wherein the Tariff Submitter proposes to comply with a FERC order. There is no automated rule to change the status of the Tariff Filing. These status changes will require FERC action.
- Amendment - This category is used for Type of Filings wherein the Tariff Submitter proposes to change a pending Tariff Filing prior to FERC or business process rule action on a Normal or Compliance Type of Filing. A Tariff Submitter cannot amend a filing that FERC has acted upon either by order or by rule of law. Amendment Type of Filings modify the timing of automated action on the associated Normal or Amendment Type of Filing. An Amendment subordinates the associated Type of Filing to the Amendment Type of Filing. Amendments can be infinitely associated with each other with the same result of modifying the timing of automated action on the

**Updated Proposed Draft Implementation Guide
As of NAESB eTariff Meeting 01/25/2008**

associated Normal Type of Filing and subordinates it to the Amendment Type of Filing.

- Motion - This category of Type of Filing can only be associated with Tariff Records whose status condition in the FERC eTariff database is “suspended”. The only action that a filing in this category can do is to change the Proposed Effective Date of the Tariff Record that is “suspended”. Any change in the tariff, rate schedule, or service agreement is ignored. If a Tariff Submitter wishes to change both the status of suspended Tariff Record and tariff, rate schedule, or service agreement, it must file a “Compliance” Type of Filing.
- Withdraw - This category of Type of Filing can only be associated with Tariff Records that are (depending on the program) in the FERC eTariff database in a “pending”, “conditional” or “suspended” status condition. Any change in the tariff, rate schedule, or service agreement is ignored. This business process rule may (depending on the program) automatically withdraw the targeted Tariff Record and change the formerly “superseded” Tariff Records to “effective.” Therefore, no additional Tariff Filing or Tariff Records are required to reinstate the superseded Tariff Record.

Note: A Withdraw Type of Filing may only be for a specific Tariff Record, or for all Tariff Records, in the associated filing. If the Tariff Submitter desires to withdraw a complete filing, it must target every Tariff Record in the associated filing.

- Report - This category of Type of Filing contains no Tariff Record information. It can only be used to supplement the record of the proceeding. Basically, the Report Type of Filing is meant to provide Tariff Submitters a means to make complex filings with FERC in an established proceeding as an alternative to FERC’s eFiling website portal for non-Tariff Filings.
- Cancellation - This category of Type of Filing is used by the Tariff Submitter to terminate a Tariff Record. Once a Tariff Record is cancelled, only Compliance Type of Filings with a Proposed Effective Date before the effective date of the cancelled Tariff Record may be filed using the cancelled Record Identifier.

- **Attachment Reference Code** (att_ref_code) - This file contains seven columns:
 1. **filing_type** – This column relates the Type of Filing with the available selection of attachments.
 2. **att_ref_code** – This column is used to populate the att_ref_code XML data element field for each attachment.
 3. **att_desc** – This column is used to populate the att_desc XML data element field for each attachment.

**Updated Proposed Draft Implementation Guide
As of NAESB eTariff Meeting 01/25/2008**

4. *citations* – This column provides the corresponding Citation to FERC regulation. This is simply a text field that provides the reader with additional information as to the source of the requirement.
 5. *is_required* – This column will indicate either yes (Y) or no (N). Certain documents are required by either regulation or business rule for the Tariff Filing to be considered complete enough for the SOC to accept for filing. For each Type of Filing code, the attachments expected with each filing are identified, and for each attachment the coding as to whether the attachment is required by the SOC as a minimal condition is provided.
 6. *can_waive* - This column will indicate either yes (Y) or no (N). Some attachments may be required, but FERC may permit the Tariff Submitter to request that the requirement be waived. FERC will post whether a required attachment may be waived.
 7. *req_access_lvl* – This column indicates the required security level on a file as indicated in the att_security_level download file. A blank indicates no required security level. The values are defined below:
 - P = Public
 - M = Privileged
 - X = Critical Energy Infrastructure Information
- **Attachment Content Type Code** (att_content_type_code) - This file contains two columns:
 1. **att_content_type_code** - The values are used to populate the att_content_type_code XML data element for each attachment.
 2. *description* – The description of the electronic format represented by the code.
 - **Attachment Security Level** (att_security_level) - This file contains two columns:
 1. **att_security_level** – The values are used to populate the att_security_level field for each attachment.
 2. *description* - Description of the FERC security level associated with the att_security_level. Note that every attached document must have a populated att_security_level. FERC will not presume any default document security level.
 - **Record Content Type Code** (record_content_type_code) - This file contains two columns:
 1. **record_content_type_code** – The values are used to populate the record_content_type_code field for each record.
 2. *description* - Describes the record_content_type_code.

**Updated Proposed Draft Implementation Guide
As of NAESB eTariff Meeting 01/25/2008**

- **Validation error codes** - This file contains two columns:
 1. *error_code* – The values for the identified error.
 2. *description* - Describes the error.

DRAFT

Technical Specifications

Electronic Delivery Specifications

- **High-level Summary**

The following section defines the technical details and processes for computer-to-computer exchange of an XML file between a Tariff Submitter and FERC for electronic-Tariff Filings. It also defines eFiling authentication, eTariff portal security, and information on error / messages, security and maintenance. It does not provide information related to developing a Tariff Submitter's document management system as FERC is not providing a system to manage the Tariff Submitter's tariffs, rate schedules, or service agreements. The Tariff Submitter can either purchase a third party software system, or design and develop its own system (manual or automated) to maintain its tariffs, rate schedules, or service agreements. The Tariff Submitter will provide an XML formatted eTariff filing in accordance with the eTariff standards and other FERC requirements.

The Tariff Submitter will not have direct access to the FERC eTariff database to add, change or delete records. The Tariff Submitter will only be able to maintain its data in the FERC eTariff database via data sent through the eTariff filing process.

The following process describes the electronic Tariff Filings that **must** be filed through the FERC's eFiling web page located at www.ferc.gov.

- **Format of Upload Data**

The eFiling portal for eTariff filing packages assumes the Tariff Submitter has already produced an XML file that contains both data tags and embedded data per the business specifications provided and has been packaged as a zip file. There are no restrictions on the file name other than "normal" file naming conventions (i.e., a file name should contain no periods except the period preceding the file extension and no backslashes), the total character length must be 64 characters or less, and must have a ".ZIP" extension.

- **Login/authentication Requirements**

eRegistration:

In order to submit a Tariff Filing through the eTariff portal, the User must be eRegistered with FERC. The eRegistration process will allow the User to login to FERC's eFiling portal. The instructions on how a User may become eRegistered are located at www.ferc.gov. **eFiling Requirements:**

**Updated Proposed Draft Implementation Guide
As of NAESB eTariff Meeting 01/25/2008**

The FERC's eFiling *Reference Guide* located at www.ferc.gov provides a step-by-step set of instructions and expected results for the eFiling process.

Company Registration Requirements:

To log into FERC's eTariff portal, the User will be required to have a Company Login number. This number is unique for each company filing tariffs, rate schedules, or service agreements with FERC. All Users will enter the same number for a given company. This number is company proprietary and should be treated as such. Instructions on how to obtain a Company Login number are located at www.ferc.gov. Note: this number should not be confused with the data element Company Identifier contained in the data dictionary.

- **Minimum Technical Capabilities of Browser Clients**

FERC's eFiling portal is compatible with most common internet browsers, but is optimized for use with Microsoft® Internet Explorer 6.0.

- **Error Codes and Handling**

Error codes that can occur during the upload of the eTariff package on the FERC eFiling portal will be provided as described in the eFiling documentation, located at www.ferc.gov.

The e-mail that results from the eTariff verification process will use specific error codes/descriptions. The error codes provided within the e-mail can be decoded with the FERC-published code table located at www.ferc.gov. This table can be downloaded in CSV format and may be available in PDF format.

As of January 2008, FERC eTariff verification process has not been written. Examples of some validation tests that may be included are:

- The Company Login number entered by the User is not an eTariff registered company;
- Missing required attachments;
- Unacceptable file types;
- Binary data files that are larger than FERC's eFiling electronic document size limit;
- Missing required data, such as Tariff Identifier and Filing Identifier;
- Conflicting and/or inconsistent data, such as Tariff Identifier and Filing Identifier; and,
- Missing/invalid Tariff Record data as determined by the Type of Filing.

- **Security Specifications**

Tariff Submitters are responsible for security of the Company Login number and all data contained in their filing that resides on their internal systems.

Electronic transfer of the ZIP file is via the FERC eFiling portal using secure login (from eRegistration) and HTTPS for User interaction, and data transfer using a web browser. Refer to FERC eFiling specifications for minimal requirements of browsers using FERC web pages located at www.ferc.gov.

Data security at FERC is the responsibility of FERC.

- **Testing Guidelines**

FERC will provide a facility/function that will receive an eTariff XML filing package and verify it can be opened and parsed. This facility will be available for use at any time. It will not validate data content or other FERC business processing. Information on how to access and use this testing facility will be made available.

Other testing of further system functions may be provided during the transition period when eTariff is being developed and finalized inside FERC, e.g., the type of testing that was allowed during the eTariff Field Software prototype effort. This additional testing capability would only be available for a specific, pre-defined, amount of time during FERC system development.

- **Maintenance**

The eTariff XML schema and associated code definition and downloadable CSV files will be maintained on the FERC website. Significant changes to any of these items will follow normal FERC notice/comment process. This process will also indicate the effective date of the change, and whether there will be a transition period.

Revisions to the eTariff XML schema code definition files will be posted in downloadable XSD and PDF formats located at www.ferc.gov. In the event of a discrepancy between the PDF and XSD files, the XSD file shall take precedence.

Revised code definition files will be posted in downloadable CSV file and may be available in a PDF file on FERC's website located at www.ferc.gov.

FERC will not certify or will not support software that Tariff Submitters may develop or purchase. Owners of these software packages are responsible for their maintenance and ensuring that any required eTariff XML schema and/or code revisions posted by FERC are properly recognized by such software.

XML Schema Version 1

Set forth below is Version 1 of the XML Schema that must be used to submit a Tariff Filing through FERC's eFiling / eTariff Portal.

```
<?xml version="1.0" encoding="utf-8"?>
<xs:schema id="ferc_tariff_filing" targetNamespace="http://ferc.gov/etariff.xsd"
elementFormDefault="qualified" xmlns="http://ferc.gov/etariff.xsd"
xmlns:xs="http://www.w3.org/2001/XMLSchema" >
  <xs:element name="document">
    <xs:complexType>
      <xs:choice minOccurs="1" maxOccurs="1">
        <xs:element name="ferc_filing_data" minOccurs="1" maxOccurs="unbounded">
          <xs:complexType>
            <xs:sequence>
              <xs:element name="schema_version" type="xs:string" nillable="true"/>
              <xs:element name="company_id" type="xs:string" nillable="true"/>
              <xs:element name="tariff_id" type="xs:integer" nillable="true"/>
              <xs:element name="tariff_title" type="xs:string" nillable="true"/>
              <xs:element name="filing_id" type="xs:integer" nillable="true"/>
              <xs:element name="filing_title" type="xs:string" nillable="true"/>
              <xs:element name="filing_type" type="xs:integer" nillable="true"/>
              <xs:element name="associated_filing_id" type="xs:integer" nillable="true"/>
              <xs:element name="validation_email" type="xs:string" nillable="true"/>
              <xs:element name="pay_confirm_code" type="xs:string" nillable="true"/>
              <xs:element name="suspend_motion" type="xs:string" nillable="true"/>
              <xs:element name="attachment_data" minOccurs="1"
maxOccurs="unbounded">
                <xs:complexType>
                  <xs:sequence>
                    <xs:element name="att_ref_code" type="xs:integer" nillable="true"/>
                    <xs:element name="att_desc" type="xs:string" nillable="true"/>
                    <xs:element name="att_waiver_request" type="xs:string" nillable="true"/>
                    <xs:element name="att_binary_data" type="xs:base64Binary" nillable="true"
/>
                    <xs:element name="att_filename" type="xs:string" nillable="true"/>
                    <xs:element name="att_content_type_code" type="xs:integer"
nillable="true"/>
                    <xs:element name="att_security_level" type="xs:string" nillable="true"/>
                  </xs:sequence>
                </xs:complexType>
              </xs:element>
              <xs:element name="record_data" minOccurs="0" maxOccurs="unbounded">
                <xs:complexType>
                  <xs:sequence>
                    <xs:element name="record_id" type="xs:integer" nillable="true"/>
                    <xs:element name="option_code" type="xs:string" nillable="true"/>
                    <xs:element name="record_title" type="xs:string" nillable="true"/>

```


**Updated Proposed Draft Implementation Guide
As of NAESB eTariff Meeting 01/25/2008**

```

    <xs:element name="record_content_desc" type="xs:string" nillable="true"/>
    <xs:element name="record_version_num" type="xs:string" nillable="true"/>
    <xs:element      name="record_narrative_name"      type="xs:string"
nillable="true"/>
    <xs:element name="collation_value" type="xs:integer" nillable="true"/>
    <xs:element name="record_parent_id" type="xs:integer" nillable="true"/>
    <xs:element      name="proposed_effective_date"      type="xs:date"
nillable="true"/>
    <xs:element name="priority_order" type="xs:integer" nillable="true"/>
    <xs:element      name="record_content_type_code"      type="xs:integer"
nillable="true"/>
    <xs:element      name="record_binary_data"      type="xs:base64Binary"
nillable="true"/>
    <xs:element name="record_plain_text" type="xs:string" nillable="true"/>
    <xs:element name="record_change_type" type="xs:string" nillable="true"/>
    <xs:element name="associated_filing_id" type="xs:integer" nillable="true" />
    <xs:element name="associated_record_id" type="xs:integer" nillable="true"
/>
    <xs:element      name="associated_option_code"      type="xs:string"
nillable="true" />
  </xs:sequence>
</xs:complexType>
</xs:element>
</xs:sequence>
</xs:complexType>
</xs:element>
</xs:choice>
</xs:complexType>
</xs:element>
</xs:schema>

```

Note: The XML Schema definition language (XSD) defines four attributes for use in XML instance documents, indicated by the <http://www.w3.org/2001/XMLSchema-instance> namespace. Information regarding these four attributes is located at <http://msdn2.microsoft.com/en-us/library/ms256207.aspx> and <http://www.w3.org/TR/xmlschema-1/>. The eTariff specifications contained in this document utilize the nil="true" attribute to indicate an empty (null) numeric element. It has been determined that some XML software tools do not support the nil="true" attribute. The software developer should thoroughly investigate the capabilities of their development tool sets to ensure that they support the nil="true" attribute.

**Updated Proposed Draft Implementation Guide
As of NAESB eTariff Meeting 01/25/2008**

Use Case Descriptions

Following is a table reflecting the various types of filings and the corresponding Case Number as identified by the respective industries. The use cases in **bold** text indicate that following this table, an example of the use case is provided. These use cases are examples.

A few things to consider in the use of these examples:

- The codes utilized are as of January 2008 and are subject to change.
- Column headings in the sections of Tariff Records correspond to the data element business names and have been abbreviated due to space limitations herein.
- The columns in the tables below are not in the same order as reflected in the Data Dictionary Data Tables or the XML Schema.

“Note 1” (included in the following examples): Indicates that Binary Data should be provided but has not been included herein. For an example of what Base64 encoded binary data would look like, please see the Example XML eTariff Filing Package provided after the Use Case Examples.

Case Number	Gas Industry	Electric Industry *	Oil Industry
1A	Baseline Section(s)	Baseline Section(s)	
1B	Baseline Sheet(s)	Baseline Sheet(s)	
1C	Baseline Document(s)	Baseline Document(s)	Baseline Document(s)
2A	Baseline Section(s)	Initial Section(s)	
2B	Baseline Sheet(s)	Initial Sheet(s)	
2C	Baseline Document(s)	Initial Document(s)	Initial Document(s) New Service or Route
3A	Initial Section(s)	Amendment Section(s)	
3B	Initial Sheet(s)	Amendment Sheet(s)	
3C	Initial Document(s)	Amendment Document(s)	Supplement Document(s) Embargos Rate Changes Wording Changes Adoption Notice Document(s)
4A	Amendment Section(s)	Errata Section(s)	
4B	Amendment Sheet(s)	Errata Sheet(s)	
4C	Amendment Document(s)	Errata Document(s)	
5A	Compliance Section(s)	Compliance Section(s)	
5B	Compliance Sheet(s)	Compliance Sheet(s)	
5C	Compliance Document(s)	Compliance Document(s)	Compliance Document(s)
6A	Withdrawal Section(s)	Withdrawal Section(s)	
6B	Withdrawal Sheet(s)	Withdrawal Sheet(s)	
6C	Withdrawal Document(s)	Withdrawal Document(s)	Withdrawal Document(s)
7A	Cancellation Section(s)	Cancellation Section(s)	
7B	Cancellation Sheet(s)	Cancellation Sheet(s)	
7C	Cancellation Document(s)	Cancellation Document(s)	Cancellation Document(s)
8A	Motion Filing		

* The Use Cases enumerated in this column are applicable to electric utilities, RTOs and ISOs.

**Updated Proposed Draft Implementation Guide
As of NAESB eTariff Meeting 1/25/2008**

Use Case: 1A
Company Identifier: 013 **Industry:** Electric Industry
Tariff Identifier: 1 **Approach:** Section
Filing Identifier: 1 **Filing:** Baseline
Description: FILING OF BASELINE TARIFF USING FERC PRO FORMA OATT FROM ORDER 890.

Filing Data

Company Identifier	013	Type of Filing Code	8000	Payment Confirmation Code	
Tariff Identifier	1	Tariff Title	Pro forma OATT		
Filing Identifier	1	Filing Title Description	Initial Baseline Tariff Filing of OATT	Suspension Motion	
Associated Filing Identifier		Validation e-mail	etarifferrors@electric_company.com	Schema Version	1

Attachments

Attachment Reference Code	Attachment Waiver Request	Attachment Document File Name	Attachment Description	Attachment Security Level	Attachment Binary	Attachment Content Type Code
64100	N	Baseline Transmittal letter.rtf	Transmittal Letter	P	See Note 1	4
66300	N	USE CASE – OATT TARIFF.rtf	OATT Tariff	P	See Note 1	4

**Updated Proposed Draft Implementation Guide
As of NAESB eTariff Meeting 1/25/2008**

Tariff Records

Collation Value	Option Code	Record ID	Record Title	Record Description	Version	Record Narrative	Parent ID	Proposed Effective Date	Priority	Binary Data	Content Type	Plain Text	Record Change Type	Associated Filing ID	Associated Record ID	Associated Option Code
500	A	1001	PRO FORMA OPEN ACCESS TRANSMI SSION TARIFF	Cover Sheet	0.0.0	Pro Forma Open Access Transmissi on Tariff	0	2008-01-01	500	See Note 1	1004	Plain Text	NEW			
1000	A	1002	Table of Contents	Table of Contents	0.0.0	Table of Contents	1001	2008-01-01	500	See Note 1	1004	Plain Text	NEW			
1500	A	1003	Part I	Common Service Provisions	0.0.0	Common Service Provisions	1001	2008-01-01	500	See Note 1	1004	Plain Text	NEW			
2000	A	1004	Definitions	1 Definitions	0.0.0	Definitions	1003	2008-01-01	500	See Note 1	1004	Plain Text	NEW			
2500	A	1005	Initial Allocation and Renewal Procedure s	2 Initial Allocation and Renewal Procedures	0.0.0	Initial Allocation and Renewal Procedure s	1003	2008-01-01	500	See Note 1	1004	Plain Text	NEW			
3000	A	1006	Ancillary Services	3 Ancillary Services	0.0.0	Ancillary Services	1003	2008-01-01	500	See Note 1	1004	Plain Text	NEW			
3500	A	1007	Open Access Same Time Informatio n System (OASIS)	4 OASIS	0.0.0	OASIS	1003	2008-01-01	500	See Note 1	1004	Plain Text	NEW			
4000	A	1008	Local Furnishing Bonds	5 Local Furnishing Bonds	0.0.0	Local Furnishing Bonds	1003	2008-01-01	500	See Note 1	1004	Plain Text	NEW			

**Updated Proposed Draft Implementation Guide
As of NAESB eTariff Meeting 1/25/2008**

Collation Value	Option Code	Record ID	Record Title	Record Description	Version	Record Narrative	Parent ID	Proposed Effective Date	Priority	Binary Data	Content Type	Plain Text	Record Change Type	Associated Filing ID	Associated Record ID	Associated Option Code
4500	A	1009	Reciprocity	6 Reciprocity	0.0.0	Reciprocity	1003	2008-01-01	500	See Note 1	1004	Plain Text	NEW			
5000	A	1010	Billing and Payment	7 Billing and Payment	0.0.0	Billing and Payment	1003	2008-01-01	500	See Note 1	1004	Plain Text	NEW			
5500	A	1011	Accounting for the Transmission Provider's Use of the Tariff	8 Accounting for the Transmission Provider's Use of the Tariff	0.0.0	Accounting for the Transmission Provider's Use of the Tariff	1003	2008-01-01	500	See Note 1	1004	Plain Text	NEW			
6000	A	1012	Regulatory Filings	9 Regulatory Filings	0.0.0	Regulatory Filings	1003	2008-01-01	500	See Note 1	1004	Plain Text	NEW			
6500	A	1013	Force Majeure and Indemnification	10 Force Majeure and Indemnification	0.0.0	Force Majeure and Indemnification	1003	2008-01-01	500	See Note 1	1004	Plain Text	NEW			
7000	A	1014	Creditworthiness	11 Creditworthiness	0.0.0	Creditworthiness	1003	2008-01-01	500	See Note 1	1004	Plain Text	NEW			
7500	A	1015	Dispute Resolution Procedures	12 Dispute Resolution Procedures	0.0.0	Dispute Resolution	1003	2008-01-01	500	See Note 1	1004	Plain Text	NEW			
8000	A	1016	Part II	Point-to-Point Transmission Service	0.0.0	Point-to-Point Transmission Service	1001	2008-01-01	500	See Note 1	1004	Plain Text	NEW			
8500	A	1017	Nature of Firm Point-to-Point Transmission Service	13 Nature of Firm Point-to-Point Transmission Service	0.0.0	Nature of Firm Point-to-Point Transmission Service	1016	2008-01-01	500	See Note 1	1004	Plain Text	NEW			

**Updated Proposed Draft Implementation Guide
As of NAESB eTariff Meeting 1/25/2008**

Collation Value	Option Code	Record ID	Record Title	Record Description	Version	Record Narrative	Parent ID	Proposed Effective Date	Priority	Binary Data	Content Type	Plain Text	Record Change Type	Associated Filing ID	Associated Record ID	Associated Option Code
9000	A	1018	Nature of Non-Firm Point-to-Point Transmission Service	14 Nature of Non-Firm Point-to-Point Transmission Service	0.0.0	Nature of Non-Firm Point-to-Point Transmission Service	1016	2008-01-01	500	See Note 1	1004	Plain Text	NEW			
9500	A	1019	Service Availability	15 Service Availability	0.0.0	Service Availability	1016	2008-01-01	500	See Note 1	1004	Plain Text	NEW			
10000	A	1020	Transmission Customer Responsibilities	16 Transmission Customer Responsibilities	0.0.0	Transmission Customer Responsibilities	1016	2008-01-01	500	See Note 1	1004	Plain Text	NEW			
10500	A	1021	Procedures for Arranging Firm Point-to-Point Transmission Service	17 Procedures for Arranging Firm Point-to-Point Transmission Service	0.0.0	Procedures for Arranging Firm Point-to-Point Transmission Service	1016	2008-01-01	500	See Note 1	1004	Plain Text	NEW			
11000	A	1022	Procedures for Arranging Non-Firm Point-to-Point Transmission Service	18 Procedures for Arranging Non-Firm Point-to-Point Transmission Service	0.0.0	Procedures for Arranging Non-Firm Point-to-Point Transmission Service	1016	2008-01-01	500	See Note 1	1004	Plain Text	NEW			
11500	A	1023	Additional Study Procedures for Firm Point-to-Point Transmission Service Requests	19 Additional Study Procedures for Firm Point-to-Point Transmission Service Requests	0.0.0	Additional Study Procedures for Firm Point-to-Point Transmission Service Requests	1016	2008-01-01	500	See Note 1	1004	Plain Text	NEW			

**Updated Proposed Draft Implementation Guide
As of NAESB eTariff Meeting 1/25/2008**

Collation Value	Option Code	Record ID	Record Title	Record Description	Version	Record Narrative	Parent ID	Proposed Effective Date	Priority	Binary Data	Content Type	Plain Text	Record Change Type	Associated Filing ID	Associated Record ID	Associated Option Code
12000	A	1024	Procedures if the Transmission Provider is Unable to Complete New Transmission Facilities for Firm Point-to-Point Transmission Service	20 Procedures if the Transmission Provider is Unable to Complete New Transmission Facilities for Firm Point-to-Point Transmission Service	0.0.0	Procedures if the Transmission Provider is Unable to Complete New Transmission Facilities for Firm Point-to-Point Transmission Service	1016	2008-01-01	500	See Note 1	1004	Plain Text	NEW			
12500	A	1025	Provisions Relating to Transmission Construction and Services on the Systems of Other Utilities	21 Provisions Relating to Transmission Construction and Services on the Systems of Other Utilities	0.0.0	Provisions Relating to Transmission Construction and Services on the Systems of Other Utilities	1016	2008-01-01	500	See Note 1	1004	Plain Text	NEW			
13000	A	1026	Changes in Service Specifications	22 Changes in Service Specifications	0.0.0	Changes in Service Specifications	1016	2008-01-01	500	See Note 1	1004	Plain Text	NEW			
13500	A	1027	Sale or Assignment of Transmission Service	23 Sale or Assignment of Transmission Service	0.0.0	Sale or Assignment of Transmission Service	1016	2008-01-01	500	See Note 1	1004	Plain Text	NEW			

**Updated Proposed Draft Implementation Guide
As of NAESB eTariff Meeting 1/25/2008**

Collation Value	Option Code	Record ID	Record Title	Record Description	Version	Record Narrative	Parent ID	Proposed Effective Date	Priority	Binary Data	Content Type	Plain Text	Record Change Type	Associated Filing ID	Associated Record ID	Associated Option Code
14000	A	1028	Metering and Power Factor Correction at Receipt and Delivery Point(s)	24 Metering and Power Factor Correction at Receipt and Delivery Point(s)	0.0.0	Metering and Power Factor Correction at Receipt and Delivery Point(s)	1016	2008-01-01	500	See Note 1	1004	Plain Text	NEW			
14500	A	1029	Compensation for Transmission Service	25 Compensation for Transmission Service	0.0.0	Compensation for Transmission Service	1016	2008-01-01	500	See Note 1	1004	Plain Text	NEW			
15000	A	1030	Stranded Cost Recovery	26 Stranded Cost Recovery	0.0.0	Stranded Cost Recovery	1016	2008-01-01	500	See Note 1	1004	Plain Text	NEW			
15500	A	1031	Compensation for New Facilities and Redispatch Costs	27 Compensation for New Facilities and Redispatch Costs	0.0.0	Compensation for New Facilities and Redispatch Costs	1016	2008-01-01	500	See Note 1	1004	Plain Text	NEW			
16000	A	1032	Part III	Network Integration Transmission Service	0.0.0	Network Integration Transmission Service	1001	2008-01-01	500	See Note 1	1004	Plain Text	NEW			
16500	A	1033	Nature of Network Integration Transmission Service	28 Nature of Network Integration Transmission Service	0.0.0	Nature of Network Integration Transmission Service	1032	2008-01-01	500	See Note 1	1004	Plain Text	NEW			
17000	A	1034	Initiating Service	29 Initiating Service	0.0.0	Initiating Service	1032	2008-01-01	500	See Note 1	1004	Plain Text	NEW			
17500	A	1035	Network Resources	30 Network Resources	0.0.0	Network Resources	1032	2008-01-01	500	See Note 1	1004	Plain Text	NEW			

**Updated Proposed Draft Implementation Guide
As of NAESB eTariff Meeting 1/25/2008**

Collation Value	Option Code	Record ID	Record Title	Record Description	Version	Record Narrative	Parent ID	Proposed Effective Date	Priority	Binary Data	Content Type	Plain Text	Record Change Type	Associated Filing ID	Associated Record ID	Associated Option Code
18000	A	1036	Designation of Network Load	31 Designation of Network Load	0.0.0	Designation of Network Load	1032	2008-01-01	500	See Note 1	1004	Plain Text	NEW			
18500	A	1037	Additional Study Procedures for Network Integration Transmission Service Requests	32 Additional Study Procedures for Network Integration Transmission Service Requests	0.0.0	Additional Study Procedures for Network Integration Transmission Service Requests	1032	2008-01-01	500	See Note 1	1004	Plain Text	NEW			
19000	A	1038	Load Shedding and Curtailments	33 Load Shedding and Curtailments	0.0.0	Load Shedding and Curtailments	1032	2008-01-01	500	See Note 1	1004	Plain Text	NEW			
19500	A	1039	Rates and Charges	34 Rates and Charges	0.0.0	Rates and Charges	1032	2008-01-01	500	See Note 1	1004	Plain Text	NEW			
20000	A	1040	Operating Arrangements	35 Operating Arrangements	0.0.0	Operating Arrangements	1032	2008-01-01	500	See Note 1	1004	Plain Text	NEW			
21000	A	1042	Schedule 1	Schedule 1	0.0.0	Scheduling, System Control and Dispatch Service	1001	2008-01-01	500	See Note 1	1004	Plain Text	NEW			
21500	A	1043	Schedule 2	Schedule 2	0.0.0	Reactive Supply and Voltage Control from Generation or Other Sources Service	1001	2008-01-01	500	See Note 1	1004	Plain Text	NEW			

**Updated Proposed Draft Implementation Guide
As of NAESB eTariff Meeting 1/25/2008**

Collation Value	Option Code	Record ID	Record Title	Record Description	Version	Record Narrative	Parent ID	Proposed Effective Date	Priority	Binary Data	Content Type	Plain Text	Record Change Type	Associated Filing ID	Associated Record ID	Associated Option Code
22000	A	1044	Schedule 3	Schedule 3	0.0.0	Regulation and Frequency Response Service	1001	2008-01-01	500	See Note 1	1004	Plain Text	NEW			
22500	A	1045	Schedule 4	Schedule 4	0.0.0	Energy Imbalance Service	1001	2008-01-01	500	See Note 1	1004	Plain Text	NEW			
23000	A	1046	Schedule 5	Schedule 5	0.0.0	Operating Reserve - Spinning Reserve Service	1001	2008-01-01	500	See Note 1	1004	Plain Text	NEW			
23500	A	1047	Schedule 6	Schedule 6	0.0.0	Operating Reserve - Supplemental Reserve Service	1001	2008-01-01	500	See Note 1	1004	Plain Text	NEW			
24000	A	1048	Schedule 7	Schedule 7	0.0.0	Long-Term Firm and Short-Term Firm Point-To-Point Transmission Service	1001	2008-01-01	500	See Note 1	1004	Plain Text	NEW			
24500	A	1049	Schedule 8	Schedule 8	0.0.0	Non-Firm Point-To-Point Transmission Service	1001	2008-01-01	500	See Note 1	1004	Plain Text	NEW			
25000	A	1050	Schedule 9	Schedule 9	0.0.0	Generator Imbalance Service	1001	2008-01-01	500	See Note 1	1004	Plain Text	NEW			

**Updated Proposed Draft Implementation Guide
As of NAESB eTariff Meeting 1/25/2008**

Collation Value	Option Code	Record ID	Record Title	Record Description	Version	Record Narrative	Parent ID	Proposed Effective Date	Priority	Binary Data	Content Type	Plain Text	Record Change Type	Associated Filing ID	Associated Record ID	Associated Option Code
26000	A	1052	Attachment A	Attachment A	0.0.0	Form Of Service Agreement For Firm Point-To-Point Transmission Service	1001	2008-01-01	500	See Note 1	1004	Plain Text	NEW			
26500	A	1053	Attachment B	Attachment B	0.0.0	Form Of Service Agreement For Non-Firm Point-To-Point Transmission Service	1001	2008-01-01	500	See Note 1	1004	Plain Text	NEW			
27000	A	1054	Attachment C	Attachment C	0.0.0	Methodology To Assess Available Transfer Capability	1001	2008-01-01	500	See Note 1	1004	Plain Text	NEW			
27500	A	1055	Attachment D	Attachment D	0.0.0	Methodology for Completing a System Impact Study	1001	2008-01-01	500	See Note 1	1004	Plain Text	NEW			
28000	A	1056	Attachment E	Attachment E	0.0.0	Index Of Point-To-Point Transmission Service Customers	1001	2008-01-01	500	See Note 1	1004	Plain Text	NEW			
28500	A	1057	Attachment F	Attachment F	0.0.0	Service Agreement For Network Integration Transmission Service	1001	2008-01-01	500	See Note 1	1004	Plain Text	NEW			

**Updated Proposed Draft Implementation Guide
As of NAESB eTariff Meeting 1/25/2008**

Collation Value	Option Code	Record ID	Record Title	Record Description	Version	Record Narrative	Parent ID	Proposed Effective Date	Priority	Binary Data	Content Type	Plain Text	Record Change Type	Associated Filing ID	Associated Record ID	Associated Option Code
29000	A	1058	Attachment G	Attachment G	0.0.0	Network Operating Agreement	1001	2008-01-01	500	See Note 1	1004	Plain Text	NEW			
29500	A	1059	Attachment H	Attachment H	0.0.0	Annual Transmission Revenue Requirement For Network Integration Transmission Service	1001	2008-01-01	500	See Note 1	1004	Plain Text	NEW			
30000	A	1060	Attachment I	Attachment I	0.0.0	Index Of Network Integration Transmission Service Customers	1001	2008-01-01	500	See Note 1	1004	Plain Text	NEW			
30500	A	1061	Attachment J	Attachment J	0.0.0	Procedures for Addressing Parallel Flows	1001	2008-01-01	500	See Note 1	1004	Plain Text	NEW			
31000	A	1062	Attachment K	Attachment K	0.0.0	Transmission Planning Process	1001	2008-01-01	500	See Note 1	1004	Plain Text	NEW			
31500	A	1063	Attachment L	Attachment L	0.0.0	Creditworthiness Procedures	1001	2008-01-01	500	See Note 1	1004	Plain Text	NEW			

**Updated Proposed Draft Implementation Guide
As of NAESB eTariff Meeting 1/25/2008**

Use Case: 2C
Company Identifier: 013 **Industry:** Electric Industry
Tariff Identifier: 1 **Approach:** Document
Filing Identifier: 2 **Filing:** Initial
Description: INITIAL FILING CREATING A NEW TARIFF RECORD USING THE ENTIRE DOCUMENT SUBMISSION APPROACH.

Filing Data

Company Identifier	013	Type of Filing Code	620	Payment Confirmation Code	
Tariff Identifier	1	Tariff Title:	Pro Forma OATT		
Filing Identifier	2	Filing Title Description	Filing of Service Agreement	Suspension Motion	
Associated Filing Identifier		Validation e-mail	etarifferrors@electric_company@.com	Schema Version	1

Attachments

Attachment Reference Code	Attachment Waiver Request	Attachment Document File Name	Attachment Description	Attachment Security Level	Attachment Binary	Attachment Content Type Code
46000	N	transmittal for service agreement.rtf	Transmittal Letter	P	See Note 1	4
46400	N	Direct Assignment Charges for Network Service.pdf	Cost of Service, Total And As Allocated	P	See Note 1	3
46500	Y					
46600	Y					
46700	Y					
46800	Y					
46900	Y					
47000	Y					

**Updated Proposed Draft Implementation Guide
As of NAESB eTariff Meeting 1/25/2008**

Attachment Reference Code	Attachment Waiver Request	Attachment Document File Name	Attachment Description	Attachment Security Level	Attachment Binary	Attachment Content Type Code
66100	N	Transmission Service Agreement.pdf	Tariff	P	See Note 1	3

Tariff Records

Collation Value	Option Code	Record ID	Record Title	Record Description	Version	Record Narrative	Parent ID	Proposed Effective Date	Priority	Binary Data	Content Type	Plain Text	Record Change Type	Associated Filing ID	Associated Record ID	Associated Option Code
28550	A	1064	NITS Service Agreement with Customer T	NITS Service Agreement with Customer	0.0.0	NITS Service Agreement with Customer	1057	2008-01-01	500	See Note 1	1003	Plain Text	NEW			

DRAFT

**Updated Proposed Draft Implementation Guide
As of NAESB eTariff Meeting 1/25/2008**

Use Case: 5A
Company Identifier: 013 **Industry:** Electric Industry
Tariff Identifier: 1 **Approach:** Section
Filing Identifier: 3 **Filing:** Compliance
Description: COMPLIANCE FILING TO REPLACE A TARIFF RECORD.

Filing Data

Company Identifier	013	Type of Filing Code	4500	Payment Confirmation Code	
Tariff Identifier	1	Tariff Title Description	Pro Forma OATT		
Filing Identifier	3	Filing Title Description	Compliance Filing to Original Baseline Filing	Suspension Motion	
Associated Filing Identifier	1	Validation e-mail	etarifferrors@electric_company.com	Schema Version	1

Attachments

Attachment Reference Code	Attachment Waiver Request	Attachment Document File Name	Attachment Description	Attachment Security Level	Attachment Binary	Attachment Content Type Code
51200	N	Compliance Transmittal Letter.rtf	Transmittal Letter	P	See Note 1	4
51400	N	Marked Tariff Pages.rtf	Marked Tariff	P	See Note 1	4
65400	N	Clean Tariff Pages.rtf	Tariff	P	See Note 1	4

**Updated Proposed Draft Implementation Guide
As of NAESB eTariff Meeting 1/25/2008**

Tariff Records

Collation Value	Option Code	Record ID	Record Title	Record Description	Version	Record Narrative	Parent ID	Proposed Effective Date	Priority	Binary Data	Content Type	Plain Text	Record Change Type	Associated Filing ID	Associated Record ID	Associated Option Code
29500	A	1059	Attachment H	Attachment H	1.0.0	Annual Transmission Revenue Requirement For Network Integration Transmission Service	1001	2008-01-01	501	See Note 1	1004	Plain Text	CHANGE	1	1059	A

DRAFT

**Updated Proposed Draft Implementation Guide
As of NAESB eTariff Meeting 1/25/2008**

Use Case: 1B
Company Identifier: 069 **Industry:** Gas Industry
Tariff Identifier: 1 **Approach:** Sheet
Filing Identifier: 0108001 **Filing:** Baseline
Description: Baseline copy of an example tariff in the required electronic format to initially populate the FERC eTariff database. The new volume is the Fourth Revised Volume No 1 superseding the Third Revised Volume No 1. All tariff sheets have been revised to be Original Sheets.

Filing Data

Company Identifier	069	Type of Filing Code	7900	Payment Confirmation Code	
Tariff Identifier	1	Tariff Title:	Gas Transportation Tariff		
Filing Identifier	10108001	Filing Title Description	Baseline Filing	Suspension Motion	
Associated Filing Identifier		Validation e-mail	tariffs@gas_pipeline.com	Schema Version	1

Attachments

Attachment Reference Code	Attachment Waiver Request	Attachment Document File Name	Attachment Description	Attachment Security Level	Attachment Binary	Attachment Content Type Code
63800	N	Transmittal_letter.doc	Transmittal Letter	P	See Note 1	41
68600	N	Tariff.pdf	Tariff	P	See Note 1	3

Tariff Records

Collation Value	Option Code	Record ID	Record Title	Record Description	Version	Record Narrative	Parent ID	Proposed Effective Date	Priority	Binary Data	Content Type	Plain Text	Record Change Type	Associated Filing ID	Associated Record ID	Associated Option Code
0	A	500	Pipeline Company, L.L.C. Tariffs	Cover Page	0.0.0	Original Cover Page	0	2007-10-16	500	See Note 1	1004	Plain Text	NEW			

**Updated Proposed Draft Implementation Guide
As of NAESB eTariff Meeting 1/25/2008**

Collation Value	Option Code	Record ID	Record Title	Record Description	Version	Record Narrative	Parent ID	Proposed Effective Date	Priority	Binary Data	Content Type	Plain Text	Record Change Type	Associated Filing ID	Associated Record ID	Associated Option Code
1000	A	1000	FOURTH REVISED VOLUME NO. 1	Title Page	0.0.0	Original Title Page	500	2007-10-16	500	See Note 1	1004	Plain Text	NEW			
2000	A	1001	Table of Contents	Sheet No. 1	0.0.0	Original Sheet No. 1	1000	2007-10-16	500	See Note 1	1004	Plain Text	NEW			
3000	A	1002		Sheet No. 2	0.0.0	Original Sheet No. 2	1001	2007-10-16	500	See Note 1	1004	Plain Text	NEW			
4000	A	1003	Preliminary Statement	Sheet No. 3	0.0.0	Original Sheet No. 3	1000	2007-10-16	500	See Note 1	1004	Plain Text	NEW			
5000	A	1004	System Map	Sheet No. 4	0.0.0	Original Sheet No. 4	1000	2007-10-16	500	See Note 1	1004	Plain Text	NEW			
6000	A	1005	Currently Effective Rates	Sheet No. 5	0.0.0	Original Sheet No. 5	1000	2007-10-16	500	See Note 1	1004	Plain Text	NEW			
7000	A	1006	Reserved Sheets 6-9	Reserved Sheets 6-9	0.0.0	Original Reserved Sheets 6-9	1000	2007-10-16	500	See Note 1	1004	Plain Text	NEW			
8000	A	1007	Rate Schedules	Sheet No. 10	0.0.0	Original Sheet No. 10	1000	2007-10-16	500	See Note 1	1004	Plain Text	NEW			
9000	A	1008	Reserved Sheets 11-39	Reserved Sheets 11-39	0.0.0	Original Reserved Sheets 11-39	1000	2007-10-16	500	See Note 1	1004	Plain Text	NEW			
10000	A	1009	Rate Schedule FTS - Firm	Sheet No. 40	0.0.0	Original Sheet No. 40	1007	2007-10-16	500	See Note 1	1004	Plain Text	NEW			
11000	A	1010		Sheet No. 41	0.0.0	Original Sheet No. 41	1009	2007-10-16	500	See Note 1	1004	Plain Text	NEW			

**Updated Proposed Draft Implementation Guide
As of NAESB eTariff Meeting 1/25/2008**

Collation Value	Option Code	Record ID	Record Title	Record Description	Version	Record Narrative	Parent ID	Proposed Effective Date	Priority	Binary Data	Content Type	Plain Text	Record Change Type	Associated Filing ID	Associated Record ID	Associated Option Code
12000	A	1011		Sheet No. 42	0.0.0	Original Sheet No. 42	1009	2007-10-16	500	See Note 1	1004	Plain Text	NEW			
13000	A	1012		Sheet No. 43	0.0.0	Original Sheet No. 43	1009	2007-10-16	500	See Note 1	1004	Plain Text	NEW			
14000	A	1013		Sheet No. 44	0.0.0	Original Sheet No. 44	1009	2007-10-16	500	See Note 1	1004	Plain Text	NEW			
15000	A	1014		Sheet No. 45	0.0.0	Original Sheet No. 45	1009	2007-10-16	500	See Note 1	1004	Plain Text	NEW			
16000	A	1015		Sheet No. 46	0.0.0	Original Sheet No. 46	1009	2007-10-16	500	See Note 1	1004	Plain Text	NEW			
17000	A	1016		Sheet No. 47	0.0.0	Original Sheet No. 47	1009	2007-10-16	500	See Note 1	1004	Plain Text	NEW			
18000	A	1017		Sheet No. 48	0.0.0	Original Sheet No. 48	1009	2007-10-16	500	See Note 1	1004	Plain Text	NEW			
19000	A	1018		Sheet No. 49	0.0.0	Original Sheet No. 49	1009	2007-10-16	500	See Note 1	1004	Plain Text	NEW			
20000	A	1019	Rate Schedule ITS	Sheet No. 50	0.0.0	Original Sheet No. 50	1007	2007-10-16	500	See Note 1	1004	Plain Text	NEW			
21000	A	1020		Sheet No. 51	0.0.0	Original Sheet No. 51	1019	2007-10-16	500	See Note 1	1004	Plain Text	NEW			
22000	A	1021		Sheet No. 52	0.0.0	Original Sheet No. 52	1019	2007-10-16	500	See Note 1	1004	Plain Text	NEW			
23000	A	1022		Sheet No. 53	0.0.0	Original Sheet No. 53	1019	2007-10-16	500	See Note 1	1004	Plain Text	NEW			

**Updated Proposed Draft Implementation Guide
As of NAESB eTariff Meeting 1/25/2008**

Collation Value	Option Code	Record ID	Record Title	Record Description	Version	Record Narrative	Parent ID	Proposed Effective Date	Priority	Binary Data	Content Type	Plain Text	Record Change Type	Associated Filing ID	Associated Record ID	Associated Option Code
24000	A	1023		Sheet No. 54	0.0.0	Original Sheet No. 54	1019	2007-10-16	500	See Note 1	1004	Plain Text	NEW			
25000	A	1024		Sheet No. 55	0.0.0	Original Sheet No. 55	1019	2007-10-16	500	See Note 1	1004	Plain Text	NEW			
26000	A	1025		Sheet No. 56	0.0.0	Original Sheet No. 56	1019	2007-10-16	500	See Note 1	1004	Plain Text	NEW			
27000	A	1026		Sheet No. 57	0.0.0	Original Sheet No. 57	1019	2007-10-16	500	See Note 1	1004	Plain Text	NEW			
28000	A	1027		Sheet No. 58	0.0.0	Original Sheet No. 58	1019	2007-10-16	500	See Note 1	1004	Plain Text	NEW			
29000	A	1028	Rate Schedule FTS-2 - Firm	Sheet No. 59	0.0.0	Original Sheet No. 59	1007	2007-10-16	500	See Note 1	1004	Plain Text	NEW			
30000	A	1029		Sheet No. 60	0.0.0	Original Sheet No. 60	1028	2007-10-16	500	See Note 1	1004	Plain Text	NEW			
31000	A	1030		Sheet No. 61	0.0.0	Original Sheet No. 61	1028	2007-10-16	500	See Note 1	1004	Plain Text	NEW			
32000	A	1031		Sheet No. 62	0.0.0	Original Sheet No. 62	1028	2007-10-16	500	See Note 1	1004	Plain Text	NEW			
33000	A	1032		Sheet No. 63	0.0.0	Original Sheet No. 63	1028	2007-10-16	500	See Note 1	1004	Plain Text	NEW			
34000	A	1033		Sheet No. 64	0.0.0	Original Sheet No. 64	1028	2007-10-16	500	See Note 1	1004	Plain Text	NEW			
35000	A	1034		Sheet No. 65	0.0.0	Original Sheet No. 65	1028	2007-10-16	500	See Note 1	1004	Plain Text	NEW			

**Updated Proposed Draft Implementation Guide
As of NAESB eTariff Meeting 1/25/2008**

Collation Value	Option Code	Record ID	Record Title	Record Description	Version	Record Narrative	Parent ID	Proposed Effective Date	Priority	Binary Data	Content Type	Plain Text	Record Change Type	Associated Filing ID	Associated Record ID	Associated Option Code
36000	A	1035		Sheet No. 66	0.0.0	Original Sheet No. 66	1028	2007-10-16	500	See Note 1	1004	Plain Text	NEW			
37000	A	1036		Sheet No. 67	0.0.0	Original Sheet No. 67	1028	2007-10-16	500	See Note 1	1004	Plain Text	NEW			
38000	A	1037		Sheet No. 68	0.0.0	Original Sheet No. 68	1028	2007-10-16	500	See Note 1	1004	Plain Text	NEW			
39000	A	1038		Sheet No. 69	0.0.0	Original Sheet No. 69	1028	2007-10-16	500	See Note 1	1004	Plain Text	NEW			
40000	A	1039		Sheet No. 70	0.0.0	Original Sheet No. 70	1028	2007-10-16	500	See Note 1	1004	Plain Text	NEW			
41000	A	1040		Sheet No. 71	0.0.0	Original Sheet No. 71	1028	2007-10-16	500	See Note 1	1004	Plain Text	NEW			
42000	A	1041		Sheet No. 72	0.0.0	Original Sheet No. 72	1028	2007-10-16	500	See Note 1	1004	Plain Text	NEW			
43000	A	1042		Sheet No. 73	0.0.0	Original Sheet No. 73	1028	2007-10-16	500	See Note 1	1004	Plain Text	NEW			
44000	A	1043		Sheet No. 74	0.0.0	Original Sheet No. 74	1028	2007-10-16	500	See Note 1	1004	Plain Text	NEW			
45000	A	1044		Sheet No. 75	0.0.0	Original Sheet No. 75	1028	2007-10-16	500	See Note 1	1004	Plain Text	NEW			
46000	A	1045		Sheet No. 76	0.0.0	Original Sheet No. 76	1028	2007-10-16	500	See Note 1	1004	Plain Text	NEW			
47000	A	1046		Sheet No. 77	0.0.0	Original Sheet No. 77	1028	2007-10-16	500	See Note 1	1004	Plain Text	NEW			

**Updated Proposed Draft Implementation Guide
As of NAESB eTariff Meeting 1/25/2008**

Collation Value	Option Code	Record ID	Record Title	Record Description	Version	Record Narrative	Parent ID	Proposed Effective Date	Priority	Binary Data	Content Type	Plain Text	Record Change Type	Associated Filing ID	Associated Record ID	Associated Option Code
48000	A	1047		Sheet No. 78	0.0.0	Original Sheet No. 78	1028	2007-10-16	500	See Note 1	1004	Plain Text	NEW			
49000	A	1048		Sheet No. 79	0.0.0	Original Sheet No. 79	1028	2007-10-16	500	See Note 1	1004	Plain Text	NEW			
50000	A	1049		Sheet No. 80	0.0.0	Original Sheet No. 80	1028	2007-10-16	500	See Note 1	1004	Plain Text	NEW			
51000	A	1050		Sheet No. 81	0.0.0	Original Sheet No. 81	1028	2007-10-16	500	See Note 1	1004	Plain Text	NEW			
52000	A	1051		Sheet No. 82	0.0.0	Original Sheet No. 82	1028	2007-10-16	500	See Note 1	1004	Plain Text	NEW			
53000	A	1052	PAL Rate Schedule	Sheet No. 83	0.0.0	Original Sheet No. 83	1007	2007-10-16	500	See Note 1	1004	Plain Text	NEW			
54000	A	1053		Sheet No. 84	0.0.0	Original Sheet No. 84	1052	2007-10-16	500	See Note 1	1004	Plain Text	NEW			
55000	A	1054		Sheet No. 85	0.0.0	Original Sheet No. 85	1052	2007-10-16	500	See Note 1	1004	Plain Text	NEW			
56000	A	1055		Sheet No. 86	0.0.0	Original Sheet No. 86	1052	2007-10-16	500	See Note 1	1004	Plain Text	NEW			
57000	A	1056		Sheet No. 87	0.0.0	Original Sheet No. 87	1052	2007-10-16	500	See Note 1	1004	Plain Text	NEW			
58000	A	1057		Sheet No. 88	0.0.0	Original Sheet No. 88	1052	2007-10-16	500	See Note 1	1004	Plain Text	NEW			
59000	A	1058		Sheet No. 89	0.0.0	Original Sheet No. 89	1052	2007-10-16	500	See Note 1	1004	Plain Text	NEW			

**Updated Proposed Draft Implementation Guide
As of NAESB eTariff Meeting 1/25/2008**

Collation Value	Option Code	Record ID	Record Title	Record Description	Version	Record Narrative	Parent ID	Proposed Effective Date	Priority	Binary Data	Content Type	Plain Text	Record Change Type	Associated Filing ID	Associated Record ID	Associated Option Code
60000	A	1059	Reserved Sheets 90-98	Reserved Sheets 90-98	0.0.0	Original Reserved Sheets 90-98	1000	2007-10-16	500	See Note 1	1004	Plain Text	NEW			
61000	A	1060	General Terms and Conditions	Sheet No. 99	0.0.0	Original Sheet No. 99	1000	2007-10-16	500	See Note 1	1004	Plain Text	NEW			
62000	A	1061	1. Definitions	Sheet No. 100	0.0.0	Original Sheet No. 100	1060	2007-10-16	500	See Note 1	1004	Plain Text	NEW			
63000	A	1062		Sheet No. 101	0.0.0	Original Sheet No. 101	1061	2007-10-16	500	See Note 1	1004	Plain Text	NEW			
64000	A	1063		Sheet No. 102	0.0.0	Original Sheet No. 102	1061	2007-10-16	500	See Note 1	1004	Plain Text	NEW			
65000	A	1064		Sheet No. 103	0.0.0	Original Sheet No. 103	1061	2007-10-16	500	See Note 1	1004	Plain Text	NEW			
66000	A	1065		Sheet No. 104	0.0.0	Original Sheet No. 104	1061	2007-10-16	500	See Note 1	1004	Plain Text	NEW			
67000	A	1066		Sheet No. 105	0.0.0	Original Sheet No. 105	1061	2007-10-16	500	See Note 1	1004	Plain Text	NEW			
68000	A	1067		Sheet No. 106	0.0.0	Original Sheet No. 106	1061	2007-10-16	500	See Note 1	1004	Plain Text	NEW			
69000	A	1068	2. Assignment to Downstream Customers of Pipeline	Sheet No. 107	0.0.0	Original Sheet No. 107	1060	2007-10-16	500	See Note 1	1004	Plain Text	NEW			

**Updated Proposed Draft Implementation Guide
As of NAESB eTariff Meeting 1/25/2008**

Collation Value	Option Code	Record ID	Record Title	Record Description	Version	Record Narrative	Parent ID	Proposed Effective Date	Priority	Binary Data	Content Type	Plain Text	Record Change Type	Associated Filing ID	Associated Record ID	Associated Option Code
70000	A	1069	3. Priority of Service	Sheet No. 108	0.0.0	Original Sheet No. 108	1060	2007-10-16	500	See Note 1	1004	Plain Text	NEW			
71000	A	1070		Sheet No. 109	0.0.0	Original Sheet No. 109	1069	2007-10-16	500	See Note 1	1004	Plain Text	NEW			
72000	A	1071		Sheet No. 110	0.0.0	Original Sheet No. 110	1069	2007-10-16	500	See Note 1	1004	Plain Text	NEW			
73000	A	1072		Sheet No. 111	0.0.0	Original Sheet No. 111	1069	2007-10-16	500	See Note 1	1004	Plain Text	NEW			
74000	A	1073		Sheet No. 112	0.0.0	Original Sheet No. 112	1069	2007-10-16	500	See Note 1	1004	Plain Text	NEW			
75000	A	1074		Sheet No. 113	0.0.0	Original Sheet No. 113	1069	2007-10-16	500	See Note 1	1004	Plain Text	NEW			
76000	A	1075		Sheet No. 114	0.0.0	Original Sheet No. 114	1069	2007-10-16	500	See Note 1	1004	Plain Text	NEW			
77000	A	1076		Sheet No. 115	0.0.0	Original Sheet No. 115	1069	2007-10-16	500	See Note 1	1004	Plain Text	NEW			
78000	A	1077		Sheet No. 116	0.0.0	Original Sheet No. 116	1069	2007-10-16	500	See Note 1	1004	Plain Text	NEW			
79000	A	1078		Sheet No. 117	0.0.0	Original Sheet No. 117	1069	2007-10-16	500	See Note 1	1004	Plain Text	NEW			
80000	A	1079		Sheet No. 118	0.0.0	Original Sheet No. 118	1069	2007-10-16	500	See Note 1	1004	Plain Text	NEW			
81000	A	1080		Sheet No. 119	0.0.0	Original Sheet No. 119	1069	2007-10-16	500	See Note 1	1004	Plain Text	NEW			

**Updated Proposed Draft Implementation Guide
As of NAESB eTariff Meeting 1/25/2008**

Collation Value	Option Code	Record ID	Record Title	Record Description	Version	Record Narrative	Parent ID	Proposed Effective Date	Priority	Binary Data	Content Type	Plain Text	Record Change Type	Associated Filing ID	Associated Record ID	Associated Option Code
82000	A	1081	4. Receipt	Sheet No. 120	0.0.0	Original Sheet No. 120	1060	2007-10-16	500	See Note 1	1004	Plain Text	NEW			
83000	A	1082		Sheet No. 121	0.0.0	Original Sheet No. 121	1081	2007-10-16	500	See Note 1	1004	Plain Text	NEW			
84000	A	1083	5. Delivery of Gas for the Account of Shipper	Sheet No. 122	0.0.0	Original Sheet No. 122	1060	2007-10-16	500	See Note 1	1004	Plain Text	NEW			
85000	A	1084		Sheet No. 123	0.0.0	Original Sheet No. 123	1083	2007-10-16	500	See Note 1	1004	Plain Text	NEW			
86000	A	1085	6. Nomination/Reporting and Balancing	Sheet No. 124	0.0.0	Original Sheet No. 124	1060	2007-10-16	500	See Note 1	1004	Plain Text	NEW			
87000	A	1086		Sheet No. 125	0.0.0	Original Sheet No. 125	1085	2007-10-16	500	See Note 1	1004	Plain Text	NEW			
88000	A	1087		Sheet No. 126	0.0.0	Original Sheet No. 126	1085	2007-10-16	500	See Note 1	1004	Plain Text	NEW			
89000	A	1088		Sheet No. 127	0.0.0	Original Sheet No. 127	1085	2007-10-16	500	See Note 1	1004	Plain Text	NEW			
90000	A	1089		Sheet No. 128	0.0.0	Original Sheet No. 128	1085	2007-10-16	500	See Note 1	1004	Plain Text	NEW			
91000	A	1090		Sheet No. 129	0.0.0	Original Sheet No. 129	1085	2007-10-16	500	See Note 1	1004	Plain Text	NEW			
92000	A	1091		Sheet No. 130	0.0.0	Original Sheet No. 130	1085	2007-10-16	500	See Note 1	1004	Plain Text	NEW			

**Updated Proposed Draft Implementation Guide
As of NAESB eTariff Meeting 1/25/2008**

Collation Value	Option Code	Record ID	Record Title	Record Description	Version	Record Narrative	Parent ID	Proposed Effective Date	Priority	Binary Data	Content Type	Plain Text	Record Change Type	Associated Filing ID	Associated Record ID	Associated Option Code
93000	A	1092		Sheet No. 131	0.0.0	Original Sheet No. 131	1085	2007-10-16	500	See Note 1	1004	Plain Text	NEW			
94000	A	1093		Sheet No. 132	0.0.0	Original Sheet No. 132	1085	2007-10-16	500	See Note 1	1004	Plain Text	NEW			
95000	A	1094		Sheet No. 133	0.0.0	Original Sheet No. 133	1085	2007-10-16	500	See Note 1	1004	Plain Text	NEW			
96000	A	1095	7. Pooling Point	Sheet No. 134	0.0.0	Original Sheet No. 134	1060	2007-10-16	500	See Note 1	1004	Plain Text	NEW			
97000	A	1096		Sheet No. 135	0.0.0	Original Sheet No. 135	1095	2007-10-16	500	See Note 1	1004	Plain Text	NEW			
98000	A	1097	8. Determination of Daily Receipt	Sheet No. 136	0.0.0	Original Sheet No. 136	1060	2007-10-16	500	See Note 1	1004	Plain Text	NEW			
99000	A	1098		Sheet No. 137	0.0.0	Original Sheet No. 137	1097	2007-10-16	500	See Note 1	1004	Plain Text	NEW			
100000	A	1099	9. Determination of Deliveries	Sheet No. 138	0.0.0	Original Sheet No. 138	1060	2007-10-16	500	See Note 1	1004	Plain Text	NEW			
101000	A	1100		Sheet No. 139	0.0.0	Original Sheet No. 139	1099	2007-10-16	500	See Note 1	1004	Plain Text	NEW			
102000	A	1101	10. Operational Flow Orders	Sheet No. 140	0.0.0	Original Sheet No. 140	1060	2007-10-16	500	See Note 1	1004	Plain Text	NEW			
103000	A	1102		Sheet No. 141	0.0.0	Original Sheet No. 141	1101	2007-10-16	500	See Note 1	1004	Plain Text	NEW			

**Updated Proposed Draft Implementation Guide
As of NAESB eTariff Meeting 1/25/2008**

Collation Value	Option Code	Record ID	Record Title	Record Description	Version	Record Narrative	Parent ID	Proposed Effective Date	Priority	Binary Data	Content Type	Plain Text	Record Change Type	Associated Filing ID	Associated Record ID	Associated Option Code
104000	A	1103		Sheet No. 142	0.0.0	Original Sheet No. 142	1101	2007-10-16	500	See Note 1	1004	Plain Text	NEW			
105000	A	1104		Sheet No. 143	0.0.0	Original Sheet No. 143	1101	2007-10-16	500	See Note 1	1004	Plain Text	NEW			
106000	A	1105	11. Imbalances	Sheet No. 144	0.0.0	Original Sheet No. 144	1060	2007-10-16	500	See Note 1	1004	Plain Text	NEW			
107000	A	1106		Sheet No. 145	0.0.0	Original Sheet No. 145	1105	2007-10-16	500	See Note 1	1004	Plain Text	NEW			
108000	A	1107		Sheet No. 146	0.0.0	Original Sheet No. 146	1105	2007-10-16	500	See Note 1	1004	Plain Text	NEW			
109000	A	1108		Sheet No. 147	0.0.0	Original Sheet No. 147	1105	2007-10-16	500	See Note 1	1004	Plain Text	NEW			
110000	A	1109		Sheet No. 148	0.0.0	Original Sheet No. 148	1105	2007-10-16	500	See Note 1	1004	Plain Text	NEW			
111000	A	1110		Sheet No. 149	0.0.0	Original Sheet No. 149	1105	2007-10-16	500	See Note 1	1004	Plain Text	NEW			
112000	A	1111		Sheet No. 150	0.0.0	Original Sheet No. 150	1105	2007-10-16	500	See Note 1	1004	Plain Text	NEW			
113000	A	1112	12. Unauthorized Delivery of Gas	Sheet No. 151	0.0.0	Original Sheet No. 151	1060	2007-10-16	500	See Note 1	1004	Plain Text	NEW			
114000	A	1113		Sheet No. 152	0.0.0	Original Sheet No. 152	1112	2007-10-16	500	See Note 1	1004	Plain Text	NEW			

**Updated Proposed Draft Implementation Guide
As of NAESB eTariff Meeting 1/25/2008**

Collation Value	Option Code	Record ID	Record Title	Record Description	Version	Record Narrative	Parent ID	Proposed Effective Date	Priority	Binary Data	Content Type	Plain Text	Record Change Type	Associated Filing ID	Associated Record ID	Associated Option Code
115000	A	1114	13. Statement s, Billing, Payment, and Discountin g Policy	Sheet No. 153	0.0.0	Original Sheet No. 153	1060	2007-10-16	500	See Note 1	1004	Plain Text	NEW			
116000	A	1115		Sheet No. 154	0.0.0	Original Sheet No. 154	1114	2007-10-16	500	See Note 1	1004	Plain Text	NEW			
117000	A	1116		Sheet No. 155	0.0.0	Original Sheet No. 155	1114	2007-10-16	500	See Note 1	1004	Plain Text	NEW			
118000	A	1117		Sheet No. 156	0.0.0	Original Sheet No. 156	1114	2007-10-16	500	See Note 1	1004	Plain Text	NEW			
119000	A	1118	14. Evaluation of Credit	Sheet No. 157	0.0.0	Original Sheet No. 157	1060	2007-10-16	500	See Note 1	1004	Plain Text	NEW			
120000	A	1119		Sheet No. 158	0.0.0	Original Sheet No. 158	1118	2007-10-16	500	See Note 1	1004	Plain Text	NEW			
121000	A	1120		Sheet No. 159	0.0.0	Original Sheet No. 159	1118	2007-10-16	500	See Note 1	1004	Plain Text	NEW			
122000	A	1121	15. Informatio n and Communi cations Regarding Services	Sheet No. 160	0.0.0	Original Sheet No. 160	1060	2007-10-16	500	See Note 1	1004	Plain Text	NEW			
123000	A	1122		Sheet No. 161	0.0.0	Original Sheet No. 161	1121	2007-10-16	500	See Note 1	1004	Plain Text	NEW			
124000	A	1123		Sheet No. 162	0.0.0	Original Sheet No. 162	1121	2007-10-16	500	See Note 1	1004	Plain Text	NEW			

**Updated Proposed Draft Implementation Guide
As of NAESB eTariff Meeting 1/25/2008**

Collation Value	Option Code	Record ID	Record Title	Record Description	Version	Record Narrative	Parent ID	Proposed Effective Date	Priority	Binary Data	Content Type	Plain Text	Record Change Type	Associated Filing ID	Associated Record ID	Associated Option Code
125000	A	1124		Sheet No. 163	0.0.0	Original Sheet No. 163	1121	2007-10-16	500	See Note 1	1004	Plain Text	NEW			
126000	A	1125		Sheet No. 164	0.0.0	Original Sheet No. 164	1121	2007-10-16	500	See Note 1	1004	Plain Text	NEW			
127000	A	1126	16. Capacity Release by Firm Shippers	Sheet No. 165	0.0.0	Original Sheet No. 165	1060	2007-10-16	500	See Note 1	1004	Plain Text	NEW			
128000	A	1127		Sheet No. 166	0.0.0	Original Sheet No. 166	1126	2007-10-16	500	See Note 1	1004	Plain Text	NEW			
129000	A	1128		Sheet No. 167	0.0.0	Original Sheet No. 167	1126	2007-10-16	500	See Note 1	1004	Plain Text	NEW			
130000	A	1129		Sheet No. 168	0.0.0	Original Sheet No. 168	1126	2007-10-16	500	See Note 1	1004	Plain Text	NEW			
131000	A	1130		Sheet No. 169	0.0.0	Original Sheet No. 169	1126	2007-10-16	500	See Note 1	1004	Plain Text	NEW			
132000	A	1131		Sheet No. 170	0.0.0	Original Sheet No. 170	1126	2007-10-16	500	See Note 1	1004	Plain Text	NEW			
133000	A	1132		Sheet No. 171	0.0.0	Original Sheet No. 171	1126	2007-10-16	500	See Note 1	1004	Plain Text	NEW			
134000	A	1133		Sheet No. 172	0.0.0	Original Sheet No. 172	1126	2007-10-16	500	See Note 1	1004	Plain Text	NEW			
135000	A	1134		Sheet No. 173	0.0.0	Original Sheet No. 173	1126	2007-10-16	500	See Note 1	1004	Plain Text	NEW			

**Updated Proposed Draft Implementation Guide
As of NAESB eTariff Meeting 1/25/2008**

Collation Value	Option Code	Record ID	Record Title	Record Description	Version	Record Narrative	Parent ID	Proposed Effective Date	Priority	Binary Data	Content Type	Plain Text	Record Change Type	Associated Filing ID	Associated Record ID	Associated Option Code
136000	A	1135		Sheet No. 174	0.0.0	Original Sheet No. 174	1126	2007-10-16	500	See Note 1	1004	Plain Text	NEW			
137000	A	1136		Sheet No. 175	0.0.0	Original Sheet No. 175	1126	2007-10-16	500	See Note 1	1004	Plain Text	NEW			
138000	A	1137		Sheet No. 176	0.0.0	Original Sheet No. 176	1126	2007-10-16	500	See Note 1	1004	Plain Text	NEW			
139000	A	1138		Sheet No. 177	0.0.0	Original Sheet No. 177	1126	2007-10-16	500	See Note 1	1004	Plain Text	NEW			
140000	A	1139		Sheet No. 178	0.0.0	Original Sheet No. 178	1126	2007-10-16	500	See Note 1	1004	Plain Text	NEW			
141000	A	1140		Sheet No. 179	0.0.0	Original Sheet No. 179	1126	2007-10-16	500	See Note 1	1004	Plain Text	NEW			
142000	A	1141		Sheet No. 180	0.0.0	Original Sheet No. 180	1126	2007-10-16	500	See Note 1	1004	Plain Text	NEW			
143000	A	1142		Sheet No. 181	0.0.0	Original Sheet No. 181	1126	2007-10-16	500	See Note 1	1004	Plain Text	NEW			
144000	A	1143		Sheet No. 182	0.0.0	Original Sheet No. 182	1126	2007-10-16	500	See Note 1	1004	Plain Text	NEW			
145000	A	1144		Sheet No. 183	0.0.0	Original Sheet No. 183	1126	2007-10-16	500	See Note 1	1004	Plain Text	NEW			
146000	A	1145		Sheet No. 184	0.0.0	Original Sheet No. 184	1126	2007-10-16	500	See Note 1	1004	Plain Text	NEW			
147000	A	1146		Sheet No. 185	0.0.0	Original Sheet No. 185	1126	2007-10-16	500	See Note 1	1004	Plain Text	NEW			

**Updated Proposed Draft Implementation Guide
As of NAESB eTariff Meeting 1/25/2008**

Collation Value	Option Code	Record ID	Record Title	Record Description	Version	Record Narrative	Parent ID	Proposed Effective Date	Priority	Binary Data	Content Type	Plain Text	Record Change Type	Associated Filing ID	Associated Record ID	Associated Option Code
148000	A	1147		Sheet No. 186	0.0.0	Original Sheet No. 186	1126	2007-10-16	500	See Note 1	1004	Plain Text	NEW			
149000	A	1148		Sheet No. 187	0.0.0	Original Sheet No. 187	1126	2007-10-16	500	See Note 1	1004	Plain Text	NEW			
150000	A	1149		Sheet No. 188	0.0.0	Original Sheet No. 188	1126	2007-10-16	500	See Note 1	1004	Plain Text	NEW			
151000	A	1150		Sheet No. 189	0.0.0	Original Sheet No. 189	1126	2007-10-16	500	See Note 1	1004	Plain Text	NEW			
152000	A	1151		Sheet No. 190	0.0.0	Original Sheet No. 190	1126	2007-10-16	500	See Note 1	1004	Plain Text	NEW			
153000	A	1152		Sheet No. 191	0.0.0	Original Sheet No. 191	1126	2007-10-16	500	See Note 1	1004	Plain Text	NEW			
154000	A	1153		Sheet No. 192	0.0.0	Original Sheet No. 192	1126	2007-10-16	500	See Note 1	1004	Plain Text	NEW			
155000	A	1154		Sheet No. 193	0.0.0	Original Sheet No. 193	1126	2007-10-16	500	See Note 1	1004	Plain Text	NEW			
156000	A	1155		Sheet No. 194	0.0.0	Original Sheet No. 194	1126	2007-10-16	500	See Note 1	1004	Plain Text	NEW			
157000	A	1156		Sheet No. 195	0.0.0	Original Sheet No. 195	1126	2007-10-16	500	See Note 1	1004	Plain Text	NEW			
158000	A	1157		Sheet No. 196	0.0.0	Original Sheet No. 196	1126	2007-10-16	500	See Note 1	1004	Plain Text	NEW			
159000	A	1158		Sheet No. 197	0.0.0	Original Sheet No. 197	1126	2007-10-16	500	See Note 1	1004	Plain Text	NEW			

**Updated Proposed Draft Implementation Guide
As of NAESB eTariff Meeting 1/25/2008**

Collation Value	Option Code	Record ID	Record Title	Record Description	Version	Record Narrative	Parent ID	Proposed Effective Date	Priority	Binary Data	Content Type	Plain Text	Record Change Type	Associated Filing ID	Associated Record ID	Associated Option Code
160000	A	1159		Sheet No. 198	0.0.0	Original Sheet No. 198	1126	2007-10-16	500	See Note 1	1004	Plain Text	NEW			
161000	A	1160		Sheet No. 199	0.0.0	Original Sheet No. 199	1126	2007-10-16	500	See Note 1	1004	Plain Text	NEW			
162000	A	1161		Sheet No. 200	0.0.0	Original Sheet No. 200	1126	2007-10-16	500	See Note 1	1004	Plain Text	NEW			
163000	A	1162		Sheet No. 201	0.0.0	Original Sheet No. 201	1126	2007-10-16	500	See Note 1	1004	Plain Text	NEW			
164000	A	1163	17. Advertisement and Marketing Fees	Sheet No. 202	0.0.0	Original Sheet No. 202	1060	2007-10-16	500	See Note 1	1004	Plain Text	NEW			
165000	A	1164	18. Pre-Granted Abandonment, Contract Rollovers and Right of First Refusal	Sheet No. 203	0.0.0	Original Sheet No. 203	1060	2007-10-16	500	See Note 1	1004	Plain Text	NEW			
166000	A	1165		Sheet No. 204	0.0.0	Original Sheet No. 204	1164	2007-10-16	500	See Note 1	1004	Plain Text	NEW			
167000	A	1166		Sheet No. 205	0.0.0	Original Sheet No. 205	1164	2007-10-16	500	See Note 1	1004	Plain Text	NEW			
168000	A	1167		Sheet No. 206	0.0.0	Original Sheet No. 206	1164	2007-10-16	500	See Note 1	1004	Plain Text	NEW			
169000	A	1168		Sheet No. 207	0.0.0	Original Sheet No. 207	1164	2007-10-16	500	See Note 1	1004	Plain Text	NEW			

**Updated Proposed Draft Implementation Guide
As of NAESB eTariff Meeting 1/25/2008**

Collation Value	Option Code	Record ID	Record Title	Record Description	Version	Record Narrative	Parent ID	Proposed Effective Date	Priority	Binary Data	Content Type	Plain Text	Record Change Type	Associated Filing ID	Associated Record ID	Associated Option Code
170000	A	1169		Sheet No. 208	0.0.0	Original Sheet No. 208	1164	2007-10-16	500	See Note 1	1004	Plain Text	NEW			
171000	A	1170	19. Operation Control	Sheet No. 209	0.0.0	Original Sheet No. 209	1060	2007-10-16	500	See Note 1	1004	Plain Text	NEW			
172000	A	1171		Sheet No. 210	0.0.0	Original Sheet No. 210	1170	2007-10-16	500	See Note 1	1004	Plain Text	NEW			
173000	A	1172	20. Measurement	Sheet No. 211	0.0.0	Original Sheet No. 211	1060	2007-10-16	500	See Note 1	1004	Plain Text	NEW			
174000	A	1173		Sheet No. 212	0.0.0	Original Sheet No. 212	1172	2007-10-16	500	See Note 1	1004	Plain Text	NEW			
175000	A	1174	21. Pressure and Delivery Conditions	Sheet No. 213	0.0.0	Original Sheet No. 213	1060	2007-10-16	500	See Note 1	1004	Plain Text	NEW			
176000	A	1175	22. Quality of Gas	Sheet No. 214	0.0.0	Original Sheet No. 214	1060	2007-10-16	500	See Note 1	1004	Plain Text	NEW			
177000	A	1176		Sheet No. 215	0.0.0	Original Sheet No. 215	1175	2007-10-16	500	See Note 1	1004	Plain Text	NEW			
178000	A	1177	23. Force Majeure	Sheet No. 216	0.0.0	Original Sheet No. 216	1060	2007-10-16	500	See Note 1	1004	Plain Text	NEW			
179000	A	1178	24. Possession of Gas, Title and Responsibility	Sheet No. 217	0.0.0	Original Sheet No. 217	1060	2007-10-16	500	See Note 1	1004	Plain Text	NEW			
180000	A	1179	25. Notification	Sheet No. 218	0.0.0	Original Sheet No. 218	1060	2007-10-16	500	See Note 1	1004	Plain Text	NEW			

**Updated Proposed Draft Implementation Guide
As of NAESB eTariff Meeting 1/25/2008**

Collation Value	Option Code	Record ID	Record Title	Record Description	Version	Record Narrative	Parent ID	Proposed Effective Date	Priority	Binary Data	Content Type	Plain Text	Record Change Type	Associated Filing ID	Associated Record ID	Associated Option Code
181000	A	1180		Sheet No. 219	0.0.0	Original Sheet No. 219	1179	2007-10-16	500	See Note 1	1004	Plain Text	NEW			
182000	A	1181	26. Facilities/Obligation to Carry Out Agreement/Filings	Sheet No. 220	0.0.0	Original Sheet No. 220	1060	2007-10-16	500	See Note 1	1004	Plain Text	NEW			
183000	A	1182	27. Indemnification	Sheet No. 221	0.0.0	Original Sheet No. 221	1060	2007-10-16	500	See Note 1	1004	Plain Text	NEW			
184000	A	1183	28. Successors and Assigns	Sheet No. 222	0.0.0	Original Sheet No. 222	1060	2007-10-16	500	See Note 1	1004	Plain Text	NEW			
185000	A	1184	29. Regulation	Sheet No. 223	0.0.0	Original Sheet No. 223	1060	2007-10-16	500	See Note 1	1004	Plain Text	NEW			
186000	A	1185	30. Miscellaneous	Sheet No. 224	0.0.0	Original Sheet No. 224	1060	2007-10-16	500	See Note 1	1004	Plain Text	NEW			
187000	A	1186		Sheet No. 225	0.0.0	Original Sheet No. 225	1185	2007-10-16	500	See Note 1	1004	Plain Text	NEW			
188000	A	1187	31. Complaint Procedure	Sheet No. 226	0.0.0	Original Sheet No. 226	1060	2007-10-16	500	See Note 1	1004	Plain Text	NEW			
189000	A	1188	32. Annual Charges Adjustment Charge	Sheet No. 227	0.0.0	Original Sheet No. 227	1060	2007-10-16	500	See Note 1	1004	Plain Text	NEW			
190000	A	1189	33. North American Energy Standards Board (NAESB)	Sheet No. 228	0.0.0	Original Sheet No. 228	1060	2007-10-16	500	See Note 1	1004	Plain Text	NEW			

**Updated Proposed Draft Implementation Guide
As of NAESB eTariff Meeting 1/25/2008**

Collation Value	Option Code	Record ID	Record Title	Record Description	Version	Record Narrative	Parent ID	Proposed Effective Date	Priority	Binary Data	Content Type	Plain Text	Record Change Type	Associated Filing ID	Associated Record ID	Associated Option Code
191000	A	1190		Sheet No. 229	0.0.0	Original Sheet No. 229	1189	2007-10-16	500	See Note 1	1004	Plain Text	NEW			
192000	A	1191	34. Negotiated Rates	Sheet No. 230	0.0.0	Original Sheet No. 230	1060	2007-10-16	500	See Note 1	1004	Plain Text	NEW			
193000	A	1192		Sheet No. 231	0.0.0	Original Sheet No. 231	1191	2007-10-16	500	See Note 1	1004	Plain Text	NEW			
194000	A	1193		Sheet No. 232	0.0.0	Original Sheet No. 232	1191	2007-10-16	500	See Note 1	1004	Plain Text	NEW			
195000	A	1194		Sheet No. 233	0.0.0	Original Sheet No. 233	1191	2007-10-16	500	See Note 1	1004	Plain Text	NEW			
196000	A	1195	35. Non-Conforming Agreements	Sheet No. 234	0.0.0	Original Sheet No. 234	1060	2007-10-16	500	See Note 1	1004	Plain Text	NEW			
197000	A	1196		Sheet No. 235	0.0.0	Original Sheet No. 235	1195	2007-10-16	500	See Note 1	1004	Plain Text	NEW			
198000	A	1197		Sheet No. 236	0.0.0	Original Sheet No. 236	1195	2007-10-16	500	See Note 1	1004	Plain Text	NEW			
199000	A	1198		Sheet No. 237	0.0.0	Original Sheet No. 237	1195	2007-10-16	500	See Note 1	1004	Plain Text	NEW			
200000	A	1199	Reserved Sheets No. 238 - 298	Reserved Sheets No. 238 - 298	0.0.0	Original Reserved Sheets No. 238 - 298	1000	2007-10-16	500	See Note 1	1004	Plain Text	NEW			
201000	A	1200	Form of Service Agreements	Sheet No. 299	0.0.0	Original Sheet No. 299	1000	2007-10-16	500	See Note 1	1004	Plain Text	NEW			

**Updated Proposed Draft Implementation Guide
As of NAESB eTariff Meeting 1/25/2008**

Collation Value	Option Code	Record ID	Record Title	Record Description	Version	Record Narrative	Parent ID	Proposed Effective Date	Priority	Binary Data	Content Type	Plain Text	Record Change Type	Associated Filing ID	Associated Record ID	Associated Option Code
202000	A	1201	Rate Schedules FTS and ITS	Sheet No. 300	0.0.0	Original Sheet No. 300	1200	2007-10-16	500	See Note 1	1004	Plain Text	NEW			
203000	A	1202		Sheet No. 301	0.0.0	Original Sheet No. 301	1201	2007-10-16	500	See Note 1	1004	Plain Text	NEW			
204000	A	1203		Sheet No. 302	0.0.0	Original Sheet No. 302	1201	2007-10-16	500	See Note 1	1004	Plain Text	NEW			
205000	A	1204		Sheet No. 303	0.0.0	Original Sheet No. 303	1201	2007-10-16	500	See Note 1	1004	Plain Text	NEW			
206000	A	1205		Sheet No. 304	0.0.0	Original Sheet No. 304	1201	2007-10-16	500	See Note 1	1004	Plain Text	NEW			
207000	A	1206		Sheet No. 305	0.0.0	Original Sheet No. 305	1201	2007-10-16	500	See Note 1	1004	Plain Text	NEW			
208000	A	1207	Rate Schedule FTS-2	Sheet No. 306	0.0.0	Original Sheet No. 306	1200	2007-10-16	500	See Note 1	1004	Plain Text	NEW			
209000	A	1208		Sheet No. 307	0.0.0	Original Sheet No. 307	1207	2007-10-16	500	See Note 1	1004	Plain Text	NEW			
210000	A	1209		Sheet No. 308	0.0.0	Original Sheet No. 308	1207	2007-10-16	500	See Note 1	1004	Plain Text	NEW			
211000	A	1210		Sheet No. 309	0.0.0	Original Sheet No. 309	1207	2007-10-16	500	See Note 1	1004	Plain Text	NEW			
212000	A	1211		Sheet No. 310	0.0.0	Original Sheet No. 310	1207	2007-10-16	500	See Note 1	1004	Plain Text	NEW			
213000	A	1212		Sheet No. 311	0.0.0	Original Sheet No. 311	1207	2007-10-16	500	See Note 1	1004	Plain Text	NEW			

**Updated Proposed Draft Implementation Guide
As of NAESB eTariff Meeting 1/25/2008**

Collation Value	Option Code	Record ID	Record Title	Record Description	Version	Record Narrative	Parent ID	Proposed Effective Date	Priority	Binary Data	Content Type	Plain Text	Record Change Type	Associated Filing ID	Associated Record ID	Associated Option Code
214000	A	1213	Interactive Internet Website Agreement	Sheet No. 312	0.0.0	Original Sheet No. 312	1200	2007-10-16	500	See Note 1	1004	Plain Text	NEW			
215000	A	1214		Sheet No. 313	0.0.0	Original Sheet No. 313	1213	2007-10-16	500	See Note 1	1004	Plain Text	NEW			
216000	A	1215		Sheet No. 314	0.0.0	Original Sheet No. 314	1213	2007-10-16	500	See Note 1	1004	Plain Text	NEW			
217000	A	1216		Sheet No. 315	0.0.0	Original Sheet No. 315	1213	2007-10-16	500	See Note 1	1004	Plain Text	NEW			
217000	A	1217		Sheet No. 316	0.0.0	Original Sheet No. 316	1213	2007-10-16	500	See Note 1	1004	Plain Text	NEW			
218000	A	1218		Sheet No. 317	0.0.0	Original Sheet No. 317	1213	2007-10-16	500	See Note 1	1004	Plain Text	NEW			
219000	A	1219	Interactive Internet Website User Access Auth	Sheet No. 318	0.0.0	Original Sheet No. 318	1200	2007-10-16	500	See Note 1	1004	Plain Text	NEW			
220000	A	1220		Sheet No. 319	0.0.0	Original Sheet No. 319	1219	2007-10-16	500	See Note 1	1004	Plain Text	NEW			
221000	A	1221	Parking and Lending	Sheet No. 320	0.0.0	Original Sheet No. 320	1200	2007-10-16	500	See Note 1	1004	Plain Text	NEW			
222000	A	1222		Sheet No. 321	0.0.0	Original Sheet No. 321	1221	2007-10-16	500	See Note 1	1004	Plain Text	NEW			
223000	A	1223		Sheet No. 322	0.0.0	Original Sheet No. 322	1221	2007-10-16	500	See Note 1	1004	Plain Text	NEW			

**Updated Proposed Draft Implementation Guide
As of NAESB eTariff Meeting 1/25/2008**

Collation Value	Option Code	Record ID	Record Title	Record Description	Version	Record Narrative	Parent ID	Proposed Effective Date	Priority	Binary Data	Content Type	Plain Text	Record Change Type	Associated Filing ID	Associated Record ID	Associated Option Code
224000	A	1224		Sheet No. 323	0.0.0	Original Sheet No. 323	1221	2007-10-16	500	See Note 1	1004	Plain Text	NEW			
225000	A	1225		Sheet No. 324	0.0.0	Original Sheet No. 324	1221	2007-10-16	500	See Note 1	1004	Plain Text	NEW			
226000	A	1226	Reserve Dedication Agreement (for use with Rate Schedule ITS)	Sheet No. 325	0.0.0	Original Sheet No. 325	1200	2007-10-16	500	See Note 1	1004	Plain Text	NEW			
227000	A	1227		Sheet No. 326	0.0.0	Original Sheet No. 326	1226	2007-10-16	500	See Note 1	1004	Plain Text	NEW			
228000	A	1228		Sheet No. 327	0.0.0	Original Sheet No. 327	1226	2007-10-16	500	See Note 1	1004	Plain Text	NEW			
229000	A	1229		Sheet No. 328	0.0.0	Original Sheet No. 328	1226	2007-10-16	500	See Note 1	1004	Plain Text	NEW			
230000	A	1230		Sheet No. 329	0.0.0	Original Sheet No. 329	1226	2007-10-16	500	See Note 1	1004	Plain Text	NEW			
231000	A	1231		Sheet No. 330	0.0.0	Original Sheet No. 330	1226	2007-10-16	500	See Note 1	1004	Plain Text	NEW			
232000	A	1232		Sheet No. 331	0.0.0	Original Sheet No. 331	1226	2007-10-16	500	See Note 1	1004	Plain Text	NEW			
233000	A	1233		Sheet No. 332	0.0.0	Original Sheet No. 332	1226	2007-10-16	500	See Note 1	1004	Plain Text	NEW			
234000	A	1234		Sheet No. 333	0.0.0	Original Sheet No. 333	1226	2007-10-16	500	See Note 1	1004	Plain Text	NEW			

**Updated Proposed Draft Implementation Guide
As of NAESB eTariff Meeting 1/25/2008**

Collation Value	Option Code	Record ID	Record Title	Record Description	Version	Record Narrative	Parent ID	Proposed Effective Date	Priority	Binary Data	Content Type	Plain Text	Record Change Type	Associated Filing ID	Associated Record ID	Associated Option Code
235000	A	1235		Sheet No. 334	0.0.0	Original Sheet No. 334	1226	2007-10-16	1	See Note 1	1004	Plain Text	NEW			
236000	A	1236		Sheet No. 335	0.0.0	Original Sheet No. 335	1226	2007-10-16	1	See Note 1	1004	Plain Text	NEW			
237000	A	1237		Sheet No. 336	0.0.0	Original Sheet No. 336	1226	2007-10-16	1	See Note 1	1004	Plain Text	NEW			

DRAFT

**Updated Proposed Draft Implementation Guide
As of NAESB eTariff Meeting 1/25/2008**

Use Case: 3B
Company Identifier: 069 **Industry:** Gas Industry
Tariff Identifier: 1 **Approach:** Sheet
Filing Identifier: 10108020 **Filing:** Initial
Description: Filing to add a sheet to the PAL from a reserved bundle.

Filing Data

Company Identifier	069	Type of Filing Code	1800	Payment Confirmation Code	
Tariff Identifier	1	Tariff Title	Gas Transportation Tariffs		
Filing Identifier	10108020	Filing Title Description	Add a sheet to the PAL	Suspension Motion	N
Associated Filing Identifier		Validation e-mail	tariffs@gas_pipeline.com	Schema Version	1

Attachments

Attachment Reference Code	Attachment Waiver Request	Attachment Document File Name	Attachment Description	Attachment Security Level	Attachment Binary	Attachment Content Type Code
16000	N	transmittal_letter.doc	Transmittal Letter	P	See Note 1	41
16300	N	redline.pdf	Marked Tariff	P	See Note 1	3
67500	N	tariff.pdf	Tariff	P	See Note 1	3
[TBD]	N	entire_filing.pdf	Entire Filing	P	See Note 1	3

**Updated Proposed Draft Implementation Guide
As of NAESB eTariff Meeting 1/25/2008**

Tariff Records

Collation Value	Option Code	Record ID	Record Title	Record Description	Version	Record Narrative	Parent ID	Proposed Effective Date	Priority	Binary Data	Content Type	Plain Text	Record Change Type	Associated Filing ID	Associated Record ID	Associated Option Code
60000	A	1059		Sheet No. 90	1.0.0	First Revised Sheet No. 90	1052	2007-12-31	500	See Note 1	1004	Plain Text	CHANGE			
60500	A	1238	Reserved Sheets 91-98	Reserved Sheets 91-98	0.0.0	Original Reserved Sheets 91-98	1000	2007-12-31	5001	See Note 1	1004	Plain Text	NEW			

DRAFT

**Updated Proposed Draft Implementation Guide
As of NAESB eTariff Meeting 1/25/2008**

CASE: 4B
Company Identifier: 069 **Industry:** Gas Industry
Tariff Identifier: 1 **Approach:** Sheet
Filing Identifier: 10108010 **Filing:** Amendment
Description: An amendment filing to correct a typo on First Revised Sheet No. 44 to be effective on the same date.

Filing Data

Company Identifier	069	Filing Type Code	4200	Payment Confirmation Code	
Tariff Identifier	1	Tariff Title	Gas Transportation Tariffs		
Filing Identifier	10108010	Filing Title	Docket RP08-24-001	Suspension Motion	N
Associated Filing Identifier	10108005	Validation e-mail	tariffs@gas_pipeline.com	Schema Version	1

Attachments

Attachment Reference Code	Attachment Waiver Request	Attachment Document File Name	Attachment Description	Attachment Security Level	Attachment Binary	Attachment Content Type Code
50500	N	transmittal_letter.doc	Transmittal Letter	P	See Note 1	41
50900	N	redline.pdf	Marked Tariff	P	See Note 1	3
68300	N	tariff.pdf	Tariff	P	See Note 1	3

Tariff Records

Collation Value	Option Code	Record ID	Record Title	Record Description	Version	Record Narrative	Parent ID	Proposed Effective Date	Priority	Binary Data	Content Type	Plain Text	Record Change Type	Associated Filing ID	Associated Record ID	Associated Option Code
14000	A	1013		Sheet No. 44	1.1.0	Sub First Revised Sheet No. 44	1009	2007-11-01	550	See Note 1	1004	Plain Text	CHANGE	10108005	1013	A

**Updated Proposed Draft Implementation Guide
As of NAESB eTariff Meeting 1/25/2008**

Use Case: 5B
Company Identifier: 069 **Industry:** Gas
Tariff Identifier: 1 **Approach:** Sheet
Filing Identifier: 10108015 **Filing:** Compliance
Description: A compliance filing submitting a revision to Sheet No. 44 removing a provision pursuant to FERC's request.

Filing Data

Company Identifier	069	Type of Filing Code	1700	Payment Confirmation Code	
Tariff Identifier	1	Tariff Title:	Gas Transportation Tariffs		
Filing Identifier	10108015	Filing Title Description	RP08-24-002	Suspension Motion	
Associated Filing Identifier	10108010	Validation e-mail	tariffs@gas_pipeline.com	Schema Version	1

Attachments

Attachment Reference Code	Attachment Waiver Request	Attachment Document File Name	Attachment Description	Attachment Security Level	Attachment Binary	Attachment Content Type Code
15200	N	transmittal_letter.doc	Transmittal Letter	P	See Note 1	41
15500	N	redline.pdf	Marked Tariff	P	See Note 1	3
67400	N	tariff.pdf	Tariff	P	See Note 1	3
[TBD]	N	entire_tariff.pdf	Entire	P	See Note 1	3

Tariff Records

Collation Value	Option Code	Record ID	Record Title	Record Description	Version	Record Narrative	Parent ID	Proposed Effective Date	Priority	Binary Data	Content Type	Plain Text	Record Change Type	Associated Filing ID	Associated Record ID	Associated Option Code
14000	A	1013		Sheet No. 44	1.2.0	2nd Sub First Revised Sheet No. 44	1009	2007 11-01	600	See Note 1	1004	Plain Text	CHANGE	10108010	1013	A

**Updated Proposed Draft Implementation Guide
As of NAESB eTariff Meeting 1/25/2008**

Use Case: 3B
Company Identifier: 069 **Industry:** Gas Industry
Tariff Identifier: 1 **Approach:** Sheet
Filing Identifier: 19001000 **Filing:** Initial
Description: This is the first in a series of three filings to illustrate the concept of a “squeezed” sheet which occurs in the second filing.

Filing Data

Company Identifier	069	Type of Filing Code	1800	Payment Confirmation Code	
Tariff Identifier	1	Tariff Title	Gas Transportation Tariffs		
Filing Identifier	19001000	Filing Title Description	Update Sheet 65	Suspension Motion	N
Associated Filing Identifier		Validation e-mail	tariffs@gas_pipeline.com	Schema Version	1

Attachments

Attachment Reference Code	Attachment Waiver Request	Attachment Document File Name	Attachment Description	Attachment Security Level	Attachment Binary	Attachment Content Type Code
16000	N	transmittal_letter.doc	Transmittal Letter	P	See Note 1	41
16300	N	redline.pdf	Marked Tariff	P	See Note 1	3
67500	N	tariff.pdf	Tariff	P	See Note 1	3

**Updated Proposed Draft Implementation Guide
As of NAESB eTariff Meeting 1/25/2008**

Tariff Records

Collation Value	Option Code	Record ID	Record Title	Record Description	Version	Record Narrative	Parent ID	Proposed Effective Date	Priority	Binary Data	Content Type	Plain Text	Record Change Type	Associated Filing ID	Associated Record ID	Associated Option Code
35000	A	1034		Sheet No. 65	1.0.0	First Revised Original Sheet No. 65	1028	2007-12-01	500	See Note 1	1004	Plain Text	CHANGE			

Note: FERC suspended First Revised Sheet No. 65 for 5 months, to be effective May 1, 2008. The Tariff Submitter needs to file another revision to Sheet No. 65 to become effective January 1, 2008 as in filing 19001003 below.

DRAFT

**Updated Proposed Draft Implementation Guide
As of NAESB eTariff Meeting 1/25/2008**

Use Case: 3B
Company Identifier: 069 **Industry:** Gas Industry
Tariff Identifier: 1 **Approach:** Sheet
Filing Identifier: 19001003 **Filing:** Initial
Description: This is the second in a series of three filings that illustrates the concept of a “squeezed” sheet.

Filing Data

Company Identifier	069	Type of Filing Code	1800	Payment Confirmation Code	
Tariff Identifier	1	Tariff Title	Gas Transportation Tariffs		
Filing Identifier	19001003	Filing Title Description	Update Sheet 65	Suspension Motion	N
Associated Filing Identifier		Validation e-mail	tariffs@gas_pipeline.com	Schema Version	1

Attachments

Attachment Reference Code	Attachment Waiver Request	Attachment Document File Name	Attachment Description	Attachment Security Level	Attachment Binary	Attachment Content Type Code
16000	N	transmittal_letter.doc	Transmittal Letter	P	See Note 1	41
16300	N	redline.pdf	Marked Tariff	P	See Note 1	3
67500	N	tariff.pdf	Tariff	P	See Note 1	3

**Updated Proposed Draft Implementation Guide
As of NAESB eTariff Meeting 1/25/2008**

Tariff Records

Collation Value	Option Code	Record ID	Record Title	Record Description	Version	Record Narrative	Parent ID	Proposed Effective Date	Priority	Binary Data	Content Type	Plain Text	Record Change Type	Associated Filing ID	Associated Record ID	Associated Option Code
35000	A	1034		Sheet No. 65	0.0.1	First Revised Original Sheet No. 65	1028	2008-01-01	550	See Note 1	1004	Plain Text	CHANGE			

Note: As reflected in Filing Identifier 19001000, the First Revised Sheet No. 65 was accepted by FERC and suspended to become effective May 1, 2008. The Tariff Submitter now wants to place First Revised Sheet No. 65 in to effect on May 1, 2008 as seen in Filing Identifier 19001005 below.

DRAFT

**Updated Proposed Draft Implementation Guide
As of NAESB eTariff Meeting 1/25/2008**

Use Case: 5B
Company Identifier: 069 **Industry:** Gas Industry
Tariff Identifier: 1 **Approach:** Sheet
Filing Identifier: 19001005 **Filing:** Compliance
Description: This is the third in a series of three filings that places the suspended First Revised Sheet No. 65 into effect. It also incorporates the revisions reflected in the Filing Identifier 19001003 above.

Filing Data

Company Identifier	069	Type of Filing Code	1700	Payment Confirmation Code	
Tariff Identifier	1	Tariff Title	Gas Transportation . Tariffs		
Filing Identifier	19001005	Filing Title Description	Update Sheet 65	Suspension Motion	
Associated Filing Identifier	19001000	Validation e-mail	tariffs@gas_pipeline.com	Schema Version	1

Attachments

Attachment Reference Code	Attachment Waiver Request	Attachment Document File Name	Attachment Description	Attachment Security Level	Attachment Binary	Attachment Content Type Code
15200	N	transmittal_letter.doc	Transmittal Letter	P	See Note 1	41
15500	N	redline.pdf	Marked Tariff	P	See Note 1	3
67400	N	tariff.pdf	Tariff	P	See Note 1	3

Tariff Records

Collation Value	Option Code	Record ID	Record Title	Record Description	Version	Record Narrative	Parent ID	Proposed Effective Date	Priority	Binary Data	Content Type	Plain Text	Record Change Type	Associated Filing ID	Associated Record ID	Associated Option Code
35000	A	1034		Sheet No. 65	1.1.0	Substitute First Revised Sheet No. 65	1028	5/1/2008	500	See Note 1	1004	Plain Text	CHANGE	19001003	1034	A

**Updated Proposed Draft Implementation Guide
As of NAESB eTariff Meeting 1/25/2008**

Use Case: 1C
Company Identifier: 070 **Industry:** Oil Industry
Tariff Identifier: 100 **Approach:** Document
Filing Identifier: 1 **Filing:** Baseline
Description: Baseline initial filing of an oil pipeline tariff using the entire Whole Document Format.

Filing Data

Company Identifier	070	Type of Filing Code	2900	Payment Confirmation Code	N
Tariff Identifier	100	Tariff Title	Collection of Tariffs		
Filing Identifier	1	Filing Title Description	Initial Baseline Filing of Rate Tariff	Suspension Motion	N
Associated Filing Identifier		Validation e-mail	etariff@oil_pipeline.com	Schema Version	1

Attachments

Attachment Reference Code	Attachment Waiver Request	Attachment Document File Name	Attachment Description	Attachment Security Level	Attachment Binary	Attachment Content Type Code
36200	N	Transmittal_102.pdf	Transmittal Letter	P	See Note 1	3
69300	N	Tariff_102.pdf	Tariff	P	See Note 1	3
69300	N	Tariff_103.pdf	Tariff	P	See Note 1	3

**Updated Proposed Draft Implementation Guide
As of NAESB eTariff Meeting 1/25/2008**

Tariff Records

Collation Value	Option Code	Record ID	Record Title	Record Description	Version	Record Narrative	Parent ID	Proposed Effective Date	Priority	Binary Data	Content Type	Plain Text	Record Change Type	Associated Filing ID	Associated Record ID	Associated Option Code
1000	A	1000	Rate Tariff 102	Baseline Tariff	0.0.0	Local and Proportional Contract Rate Tariff 102	0	2008-12-01	1	See Note 1	1003	Plain Text	NEW			
2000	A	1001	Rate Tariff 103	Baseline Tariff	0.0.0	Local Rate Tariff 103	0	2008-12-01	1	See Note 1	1003	Plain Text	NEW			

DRAFT

**Updated Proposed Draft Implementation Guide
As of NAESB eTariff Meeting 1/25/2008**

Use Case: 3C
Company Identifier: 070 **Industry:** Oil Industry
Tariff Identifier: 100 **Approach:** Document
Filing Identifier: 5 **Filing:** Amendment

Description: This use case follows the oil pipeline industry practice "amending" tariffs by superseding or "replacing" all or part of a tariff either by issuing a Supplement to an effective tariff publication or by issuing a tariff with a new tariff designation, cancelling the superseded supplement or tariff, and indicating where changes have been made in the new supplement or tariff.

Filing Data

Company Identifier	070	Type of Filing Code	3500	Payment Confirmation Code	N
Tariff Identifier	100	Tariff Title	Collection of Tariffs		
Filing Identifier	5	Filing Title Description	Supplement (Amendment) to Baseline Rate Tariff	Suspension Motion	N
Associated Filing Identifier		Validation e-mail	etariff@oil_pipeline.com	Schema Version	1

Attachments

Attachment Reference Code	Attachment Waiver Request	Attachment Document File Name	Attachment Description	Attachment Security Level	Attachment Binary	Attachment Content Type Code
40900	N	Transmittal_102s3.pdf	Transmittal Letter	P	See Note 1	3
69800	N	Tariff_102s3.pdf	Tariff	P	See Note 1	3

**Updated Proposed Draft Implementation Guide
As of NAESB eTariff Meeting 1/25/2008**

Tariff Records

Collation Value	Option Code	Record ID	Record Title	Record Description	Version	Record Narrative	Parent ID	Proposed Effective Date	Priority	Binary Data	Content Type	Plain Text	Record Change Type	Associated Filing ID	Associated Record ID	Associated Option Code
1000	A	1000	Rate Tariff 102 Supplement 3	Tariff Supplement	3.0.0	Local and Proportional Contract Rate Tariff 102 Supp. 3	1000	2009-07-01	500	See Note 1	1	Plain Text	CHANGE			

DRAFT

**Updated Proposed Draft Implementation Guide
As of NAESB eTariff Meeting 1/25/2008**

Use Case: 6C-1
Company Identifier: 070 **Industry:** Oil Industry
Tariff Identifier: 100 **Approach:** Document
Filing Identifier: 2 **Filing:** Supplement
Description: A tariff supplement to the baseline Tariff Filing.

Filing Data

Company Identifier	070	Type of Filing Code	3500	Payment Confirmation Code	N
Tariff Identifier	100	Tariff Title	Collection of Tariffs		
Filing Identifier	2	Filing Title Description	Supplemental to Baseline Tariff	Suspension Motion	N
Associated Filing Identifier		Validation e-mail	etariff@oil_pipeline.com	Schema Version	1

Attachments

Attachment Reference Code	Attachment Waiver Request	Attachment Document File Name	Attachment Description	Attachment Security Level	Attachment Binary	Attachment Content Type Code
40900	N	Transmittat_S102s1.pdf	Transmittal Letter	P	See Note 1	3
69800	N	Tariff_102s1.pdf	Tariff	P	See Note 1	3

**Updated Proposed Draft Implementation Guide
As of NAESB eTariff Meeting 1/25/2008**

Tariff Records

Collation Value	Option Code	Record ID	Record Title	Record Description	Version	Record Narrative	Parent ID	Proposed Effective Date	Priority	Binary Data	Content Type	Plain Text	Record Change Type	Associated Filing ID	Associated Record ID	Associated Option Code
1000	A	1000	Rate Tariff	Tariff Supplement	1.0.0	Local and Proportional Contract Rate Tariff 102 Supp. 1	1001	2009-05-18	500	See Note 1	1003	Plain Text	CHANGE			

DRAFT

**Updated Proposed Draft Implementation Guide
As of NAESB eTariff Meeting 1/25/2008**

Use Case: 6C-2
Company Identifier: 070 **Industry:** Oil Industry
Tariff Identifier: 100 **Approach:** Document
Filing Identifier: 3 **Filing:** Withdrawal
Description: An oil pipeline files a tariff publication and withdraws the filing before it becomes effective.

Filing Data

Company Identifier	070	Type of Filing Code	2800	Payment Confirmation Code	N
Tariff Identifier	100	Tariff Title	Collection of Tariffs		
Filing Identifier	3	Filing Title Description	Withdrawal of Supplemental	Suspension Motion	N
Associated Filing Identifier	2	Validation e-mail	etariff@oil_pipeline.com	Schema Version	1

Attachments

Attachment Reference Code	Attachment Waiver Request	Attachment Document File Name	Attachment Description	Attachment Security Level	Attachment Binary	Attachment Content Type Code
37500	N	Withdrawal_102s1.pdf	Transmittal Letter	P	See Note 1	3

**Updated Proposed Draft Implementation Guide
As of NAESB eTariff Meeting 1/25/2008**

Tariff Records

Collation Value	Option Code	Record ID	Record Title	Record Description	Version	Record Narrative	Parent ID	Proposed Effective Date	Priority	Binary Data	Content Type	Plain Text	Record Change Type	Associated Filing ID	Associated Record ID	Associated Option Code
1000	A	1000	Withdraw Tariff 102 Supplement 1	Withdraw Notice		Withdraw Local and Proportional Contract Rate Tariff 102 Supp. 1	0	2005-05-18	500		1	Plain Text	CHANGE	2	1000	A

DRAFT

**Updated Proposed Draft Implementation Guide
As of NAESB eTariff Meeting 1/25/2008**

Use Case: 7C
Company Identifier: 070 **Industry:** Oil Industry
Tariff Identifier: 100 **Approach:** Document
Filing Identifier: 6 **Filing:** Cancellation
Description: A tariff supplement is filed that cancels a complete database, meaning that the oil pipeline company no longer has any effective tariffs, rate schedules, or service agreements.

Filing Data

Company Identifier	070	Type of Filing Code	3000	Payment Confirmation	N
Tariff Identifier	100	Tariff Title	Collection of Tariffs		
Filing Identifier	6	Filing Title Description	Cancellation of Tariff (Database)	Suspension Motion	N
Associated Filing Identifier		Validation e-mail	etariff@oil_pipeline.com	Schema Version	1

Attachments

Attachment Reference Code	Attachment Waiver Request	Attachment Document File Name	Attachment Description	Attachment Security Level	Attachment Binary	Attachment Content Type Code
36800	N	Transmittal_Canceling_Tariffs.pdf	Transmittal Letter	P	See Note 1	3

**Updated Proposed Draft Implementation Guide
As of NAESB eTariff Meeting 1/25/2008**

Tariff Records

Collation Value	Option Code	Record ID	Record Title	Record Description	Version	Record Narrative	Parent ID	Proposed Effective Date	Priority	Binary Data	Content Type	Plain Text	Record Change Type	Associated Filing ID	Associated Record ID	Associated Option Code
1000	A	1000	Cancel Tariff Database	Cancellation Letter		Cancels Tariff		2007-10-12	500				CANCEL			

DRAFT

Example XML eTariff Filing Package

```
<document xmlns="http://ferc.gov/etariff.xsd"
xmlns:xs="http://www.w3.org/2001/XMLSchema"
xmlns:xsi="http://www.w3.org/2001/XMLSchema-instance"
xsi:schemaLocation="http://ferc.gov/etariff.xsd etariff_v1.xsd">
  <ferc_filing_data>
    <schema_version>1</schema_version>
    <company_id>070</company_id>
    <tariff_id>100</tariff_id>
    <tariff_title>Collection of Tariffs</tariff_title>
    <filing_id>6</filing_id>
    <filing_title>Cancellation of Tariff (Database)</filing_title>
    <filing_type>3000</filing_type>
    <associated_filing_id xsi:nil="true"/>
    <validation_email>etariff@oil_pipeline.com</validation_email>
    <pay_confirm_code>N</pay_confirm_code>
    <suspend_motion>N</suspend_motion>
    <attachment_data>
      <att_ref_code>36800</att_ref_code>
      <att_desc>Transmittal Letter</att_desc>
      <att_waiver_request>N</att_waiver_request>
      <att_raw_data>VABCAEQA</att_raw_data>
      <att_filename>Transmittal_Cancelling_Tariffs.pdf</att_filename>
      <att_content_type_code>3</att_content_type_code>
      <att_security_level>P</att_security_level>
    </attachment_data>
    <record_data>
      <record_id>1000</record_id>
      <option_code>A</option_code>
      <record_title>Cancel Tariff Database</record_title>
      <record_content_desc>Cancellation Letter</record_content_desc>
      <record_version_num xsi:nil="true"/>
      <record_narrative_name>Cancels Tariff</record_narrative_name>
      <collation_value>1000</collation_value>
      <record_parent_id>0</record_parent_id>
      <proposed_effective_date>2007-10-12</proposed_effective_date>
      <priority_order>500</priority_order>
      <record_content_type_code xsi:nil="true"></record_content_type_code>
      <record_binary_data xsi:nil="true"/>
      <record_plain_text xsi:nil="true"/>
      <record_change_type>CANCEL</record_change_type>
      <associated_filing_id xsi:nil="true"/>
      <associated_record_id xsi:nil="true"/>
      <associated_option_code/>
    </record_data>
  </ferc_filing_data>
</document>
```

**Updated Proposed Draft Implementation Guide
As of NAESB eTariff Meeting 1/25/2008**

</record_data>
</ferc_filing_data>
</document>

DRAFT

Frequently Asked Questions

General Questions:

Question: How many active databases may a Tariff Submitter have at any one time?

Answer: FERC recommends one although a Tariff Submitter may have more than one based on business requirements.

Question: What alternative solutions will there be for the submission of Tariff Filings if the FERC electronic filing mechanism is unavailable for use?

Answer: FERC will issue guidance as necessary via the FERC website at www.ferc.gov through notices, orders, or rulemakings.

Question: Will eFiling peak usage congestion be monitored? If congestion occurs, how will it be resolved?

Answer: FERC will be responsible and will issue guidance as necessary via the FERC website at www.ferc.gov through notices, orders, or rulemakings.

Question: If a Field Format is 'alphanumeric' does it include special characters (e.g., apostrophes)?

Answer: Yes, if they are printable characters. In the data element **Attachment Document File Name**, however, file naming conventions should be followed.

Question: Will the Tariff Submitter be able to see the status/content of a portion of a Tariff in the FERC database and if so, how/where?

Answer: No

Question: If a Tariff Submitter is using Whole Document Format and changing only one provision, may the redline attachment simply reflect that changed provision?

Answer: Yes

Data Element-Specific Questions:

Question: What is an example of a Tariff Filing which would not have any **Record Binary Data** or **Record Plain Text**?

Answer: A filing to withdraw a Tariff Record; a motion to change the proposed effective date of a Tariff Record.

Question: The **Record Binary Data**, or a portion thereof, is a diagram or a picture that is blank or gibberish when saved as plain text. How should a Tariff Submitter populate the **Record Plain Text** data element?

Answer: The Tariff Submitter should convert to plain text and submit the results of that conversion.

Question: If the **Record Binary Data**, or a portion thereof, is a scanned PDF containing text how should the Tariff Submitter create the **Record Plain Text**?

Answer: The Tariff Submitter should run an optical character recognition (OCR) program and submit the results as the **Record Plain Text**.

Question: What should a filer do if an **attachment** exceeds the maximum allowed limit?

Answer: If a binary attachment exceeds the maximum size (as specified in the data tables) the Tariff Submitter will need to make a decision on where it is appropriate to split the attachment. Each attachment "fragment" needs to be sent within the same XML package as a separate attachment.

Question: Can a **Validation e-mail** be an exploder (i.e., an e-mail address that is automatically forwards the e-mail to multiple other e-mails addresses)?

Answer: Yes

How to Effectuate Certain Types of Filing

Question: How are updates/corrections to metadata accomplished - e.g., if a mistake is made regarding a **Parent Record Identifier** or **Record Collation Value**?

Answer: Updates/corrections for metadata should be accomplished through a Tariff Filing. There is no special **Type of Filing** to make metadata corrections within the FERC eTariff database.

DRAFT